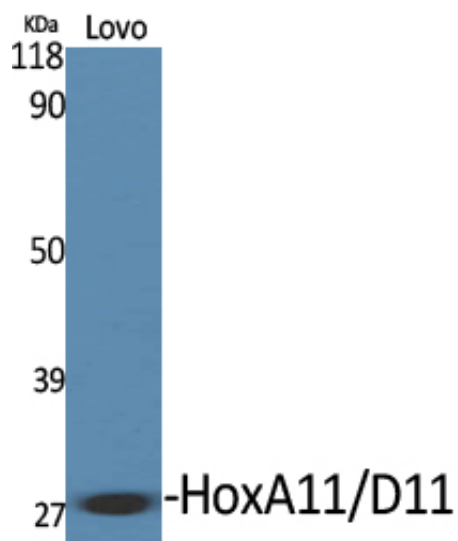




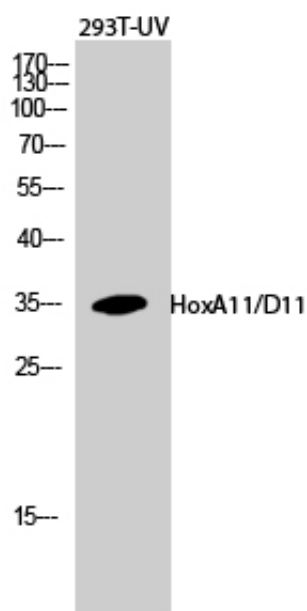
HoxA11/D11 Polyclonal Antibody

Catalog_no :	AT2210
Applications :	WB,IHC-p,IF,ELISA
Reactivity :	Human,Mouse
Category :	抗原抗体
Size :	100µg/50µg/20µg
Gene_name :	HOXA11/HOXD11
Protein_name :	Homeobox protein Hox-A11/D11
Humangene_id :	3207/3237
Humanswissprot_no :	P31270/P31277
Mousegene_id :	15396/15431
Immunogen :	The antiserum was produced against synthesized peptide derived from human HOXA11/D11. AA range:216-265
Specificity :	HoxA11/D11 Polyclonal Antibody detects endogenous levels of HoxA11/D11 protein.
Formulation :	Liquid in PBS containing 50% glycerol, 0.5% BSA and 0.02% sodium azide.
Source :	Rabbit
Dilution :	Western Blot: 1/500 - 1/2000. Immunohistochemistry: 1/100 - 1/300. Immunofluorescence: 1/200 - 1/1000. ELISA: 1/20000. Not yet tested in other applications.
Purification :	The antibody was affinity-purified from rabbit antiserum by affinity-chromatography using epitope-specific immunogen.
Concentration :	1 mg/ml
Storage_stability :	-20°C/1 year
Msds :	MSDS_Antibody.pdf
Other_name :	HOXA11; HOX1I; Homeobox protein Hox-A11; Homeobox protein Hox-1I; HOXD11; HOX4F; Homeobox protein Hox-D11; Homeobox protein Hox-4F
Molecular Weight :	28KD

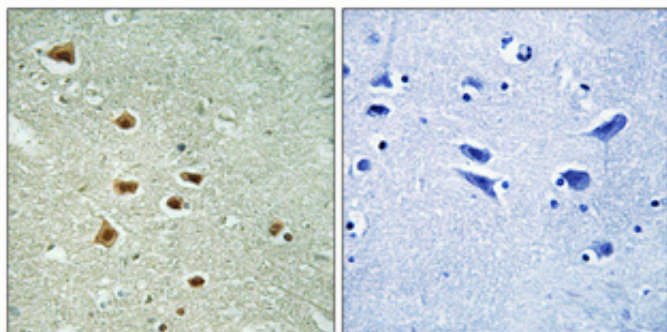
Product Images



Western Blot analysis of various cells using HoxA11/D11 Polyclonal Antibody diluted at 1 : 500 cells nucleus extracted by Minute TM Cytoplasmic and Nuclear Fractionation kit (SC-003, Inventbiotech, MN, USA).



Western Blot analysis of 293T-UV cells using HoxA11/D11 Polyclonal Antibody diluted at 1 : 500 cells nucleus extracted by Minute TM Cytoplasmic and Nuclear Fractionation kit (SC-003, Inventbiotech, MN, USA).



Immunohistochemical analysis of paraffin-embedded Human brain. Antibody was diluted at 1:100(4°, overnight). High-pressure and temperature Tris-EDTA, pH8.0 was used for antigen retrieval. Negative control (right) obtained from antibody was pre-absorbed by immunogen peptide.