

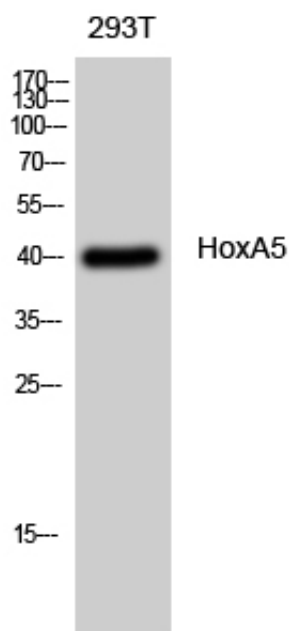
HoxA5 Polyclonal Antibody

Catalog_no :	AT2211
Applications :	WB,ELISA
Reactivity :	Human,Mouse,Rat
Category :	抗原抗体
Size :	100µg/50µg/20µg
Gene_name :	HOXA5
Protein_name :	Homeobox protein Hox-A5
Humangene_id :	3202
Humanswissprot_no :	P20719
Mousegene_id :	15402
Mouseswissprot_no :	P09021
Ratswissprot_no :	P52949
Immunogen :	Synthesized peptide derived from the N-terminal region of human HoxA5.
Specificity :	HoxA5 Polyclonal Antibody detects endogenous levels of HoxA5 protein.
Formulation :	Liquid in PBS containing 50% glycerol, 0.5% BSA and 0.02% sodium azide.
Source :	Rabbit
Dilution :	Western Blot: 1/500 - 1/2000. ELISA: 1/40000. Not yet tested in other applications.
Purification :	The antibody was affinity-purified from rabbit antiserum by affinity-chromatography using epitope-specific immunogen.
Concentration :	1 mg/ml
Storage_stability :	-20°C/1 year
Msds :	MSDS_Antibody.pdf
Other_name :	HOXA5; HOX1C; Homeobox protein Hox-A5; Homeobox protein Hox-1C
Molecular	40KD



Weight :

Product Images



Western Blot analysis of 293T cells using HoxA5 Polyclonal Antibody diluted at 1 : 500 cells nucleus extracted by Minute TM Cytoplasmic and Nuclear Fractionation kit (SC-003, Invent biotech, MN, USA).