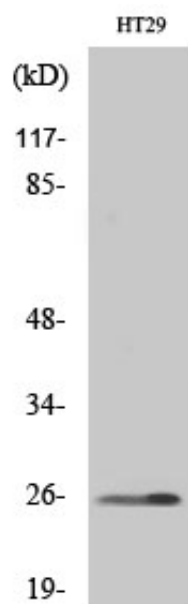




HoxA6 Polyclonal Antibody

Catalog_no :	AT2212
Applications :	WB,ELISA
Reactivity :	Human
Category :	抗原抗体
Size :	100µg/50µg/20µg
Gene_name :	HOXA6
Protein_name :	Homeobox protein Hox-A6
Humangene_id :	3203
Humanswissprot_no :	P31267
Immunogen :	The antiserum was produced against synthesized peptide derived from human HOXA6. AA range:101-150
Specificity :	HoxA6 Polyclonal Antibody detects endogenous levels of HoxA6 protein.
Formulation :	Liquid in PBS containing 50% glycerol, 0.5% BSA and 0.02% sodium azide.
Source :	Rabbit
Dilution :	Western Blot: 1/500 - 1/2000. ELISA: 1/40000. Not yet tested in other applications.
Purification :	The antibody was affinity-purified from rabbit antiserum by affinity-chromatography using epitope-specific immunogen.
Concentration :	1 mg/ml
Storage_stability :	-20°C/1 year
Msds :	MSDS_Antibody.pdf
Other_name :	HOXA6; HOX1B; Homeobox protein Hox-A6; Homeobox protein Hox-1B
Molecular Weight :	26KD

Product Images



Western Blot analysis of various cells using HoxA6 Polyclonal Antibody diluted at 1 : 1000 cells nucleus extracted by Minute TM Cytoplasmic and Nuclear Fractionation kit (SC-003, Invent biotech, MN, USA).