



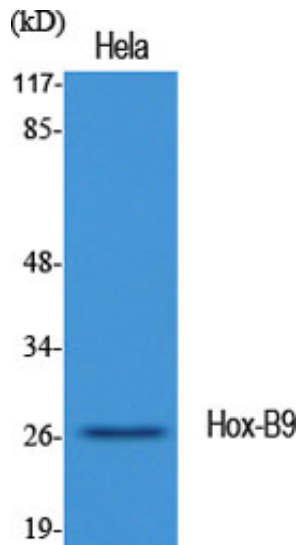
Hox-B9 Polyclonal Antibody

| | |
|---------------------|---|
| Catalog_no : | <u>AT2217</u> |
| Applications : | <u>WB,IHC-p,ELISA</u> |
| Reactivity : | <u>Human,Mouse</u> |
| Category : | <u>抗原抗体</u> |
| Size : | <u>100µg/50µg/20µg</u> |
| Gene_name : | <u>HOXB9</u> |
| Protein_name : | <u>Homeobox protein Hox-B9</u> |
| Humangene_id : | <u>3219</u> |
| Humanswissprot_no : | <u>P17482</u> |
| Mousegene_id : | <u>15417</u> |
| Mouseswissprot_no : | <u>P20615</u> |
| Immunogen : | <u>The antiserum was produced against synthesized peptide derived from human HOXB9. AA range:201-250</u> |
| Specificity : | <u>Hox-B9 Polyclonal Antibody detects endogenous levels of Hox-B9 protein.</u> |
| Formulation : | <u>Liquid in PBS containing 50% glycerol, 0.5% BSA and 0.02% sodium azide.</u> |
| Source : | <u>Rabbit</u> |
| Dilution : | <u>Western Blot: 1/500 - 1/2000. Immunohistochemistry: 1/100 - 1/300. ELISA: 1/10000. Not yet tested in other applications.</u> |
| Purification : | <u>The antibody was affinity-purified from rabbit antiserum by affinity-chromatography using epitope-specific immunogen.</u> |
| Concentration : | <u>1 mg/ml</u> |
| Storage_stability : | <u>-20°C/1 year</u> |
| Msds : | <u>MSDS_Antibody.pdf</u> |
| Other_name : | <u>HOXB9; HOX2E; Homeobox protein Hox-B9; Homeobox protein Hox-2.5; Homeobox protein Hox-2E</u> |
| Molecular | <u>28KD</u> |

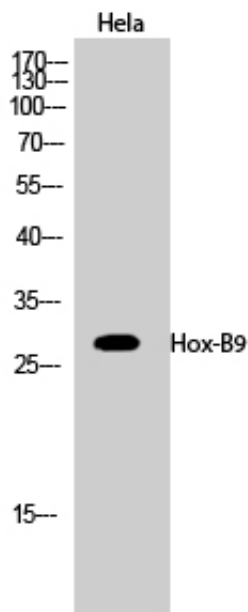


Weight :

Product Images



Western Blot analysis of various cells using Hox-B9 Polyclonal Antibody diluted at 1 : 1000 cells nucleus extracted by Minute TM Cytoplasmic and Nuclear Fractionation kit (SC-003, Inventbiotech, MN, USA).



Western Blot analysis of HeLa cells using Hox-B9 Polyclonal Antibody diluted at 1 : 1000 cells nucleus extracted by Minute TM Cytoplasmic and Nuclear Fractionation kit (SC-003, Inventbiotech, MN, USA).