

## HP1α Polyclonal Antibody

Catalog_no :	AT2223
Applications :	WB,IHC-p,IF,ELISA
Reactivity :	Human,Mouse
Category :	抗原抗体
Size :	100μg/50μg/20μg
Gene_name :	CBX5
Protein_name :	Chromobox protein homolog 5
Humangene_id :	<a href="#">23468</a>
Humanswissprot_no :	<a href="#">P45973</a>
Mousegene_id :	<a href="#">12419</a>
Mouseswissprot_no :	<a href="#">Q61686</a>
Immunogen :	The antiserum was produced against synthesized peptide derived from human CBX5. AA range:41-90
Specificity :	HP1α Polyclonal Antibody detects endogenous levels of HP1α protein.
Formulation :	Liquid in PBS containing 50% glycerol, 0.5% BSA and 0.02% sodium azide.
Source :	Rabbit
Dilution :	Western Blot: 1/500 - 1/2000. Immunohistochemistry: 1/100 - 1/300. Immunofluorescence: 1/200 - 1/1000. ELISA: 1/20000. Not yet tested in other applications.
Purification :	The antibody was affinity-purified from rabbit antiserum by affinity-chromatography using epitope-specific immunogen.
Concentration :	1 mg/ml
Storage_stability :	-20°C/1 year
Msds :	<a href="#">MSDS_Antibody.pdf</a>
Other_name :	CBX5; HP1A; Chromobox protein homolog 5; Antigen p25; Heterochromatin protein 1 homolog alpha; HP1 alpha

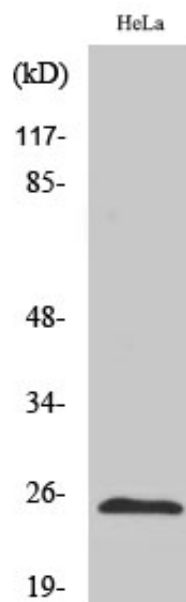


Molecular  
Weight :

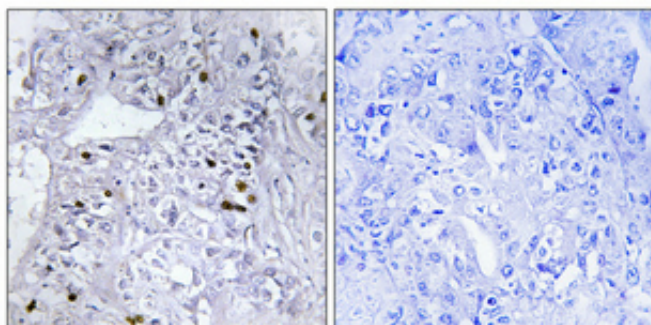
22KD

---

## Product Images



Western Blot analysis of various cells using HP1 $\alpha$  Polyclonal Antibody diluted at 1 : 1000



Immunohistochemical analysis of paraffin-embedded Human lung cancer. Antibody was diluted at 1:100(4°, overnight). High-pressure and temperature Tris-EDTA, pH8.0 was used for antigen retrieval. Negative control (right) obtained from antibody was pre-absorbed by immunogen peptide.