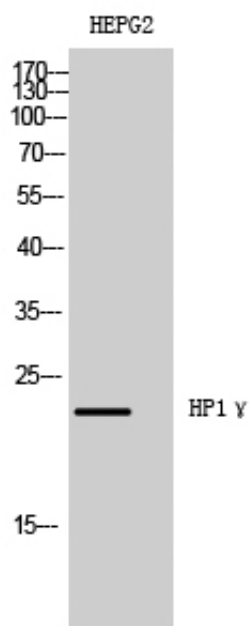




HP1γ Polyclonal Antibody

Catalog_no :	AT2224
Applications :	WB,IHC-p,ELISA
Reactivity :	Human,Mouse,Rat
Category :	抗原抗体
Size :	100μg/50μg/20μg
Gene_name :	CBX3
Protein_name :	Chromobox protein homolog 3
Humangene_id :	11335
Humanswissprot_no :	Q13185
Mouseswissprot_no :	P23198
Immunogen :	The antiserum was produced against synthesized peptide derived from human HP1 gamma. AA range:59-108
Specificity :	HP1γ Polyclonal Antibody detects endogenous levels of HP1γ protein.
Formulation :	Liquid in PBS containing 50% glycerol, 0.5% BSA and 0.02% sodium azide.
Source :	Rabbit
Dilution :	Western Blot: 1/500 - 1/2000. Immunohistochemistry: 1/100 - 1/300. ELISA: 1/40000. Not yet tested in other applications.
Purification :	The antibody was affinity-purified from rabbit antiserum by affinity-chromatography using epitope-specific immunogen.
Concentration :	1 mg/ml
Storage_stability :	-20°C/1 year
Msds :	MSDS_Antibody.pdf
Other_name :	CBX3; Chromobox protein homolog 3; HECH; Heterochromatin protein 1 homolog gamma; HP1 gamma; Modifier 2 protein
Molecular Weight :	22KD

Product Images



Western Blot analysis of HEPG2 cells using HP1 γ Polyclonal Antibody diluted at 1 : 500 cells nucleus extracted by Minute TM Cytoplasmic and Nuclear Fractionation kit (SC-003, Invent biotech, MN, USA).