



HPK1 Polyclonal Antibody

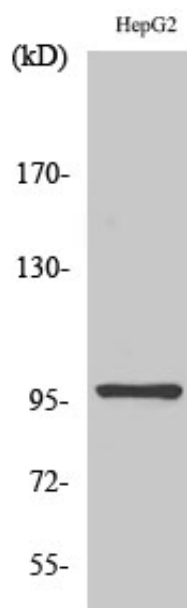
Catalog_no :	AT2225
Applications :	WB,IHC-p,ELISA
Reactivity :	Human,Mouse
Category :	抗原抗体
Size :	100µg/50µg/20µg
Gene_name :	MAP4K1
Protein_name :	Mitogen-activated protein kinase kinase kinase 1
Humangene_id :	11184
Humanswissprot_no :	Q92918
Mousegene_id :	26411
Mouseswissprot_no :	P70218
Immunogen :	The antiserum was produced against synthesized peptide derived from human MEKKK 1. AA range:371-420
Specificity :	HPK1 Polyclonal Antibody detects endogenous levels of HPK1 protein.
Formulation :	Liquid in PBS containing 50% glycerol, 0.5% BSA and 0.02% sodium azide.
Source :	Rabbit
Dilution :	Western Blot: 1/500 - 1/2000. ELISA: 1/10000. Not yet tested in other applications.
Purification :	The antibody was affinity-purified from rabbit antiserum by affinity-chromatography using epitope-specific immunogen.
Concentration :	1 mg/ml
Storage_stability :	-20°C/1 year
Msds :	MSDS_Antibody.pdf
Other_name :	MAP4K1; HPK1; Mitogen-activated protein kinase kinase kinase 1; Hematopoietic progenitor kinase; MAPK/ERK kinase kinase 1; MEK kinase kinase 1; MEKKK 1
Molecular Weight :	91KD



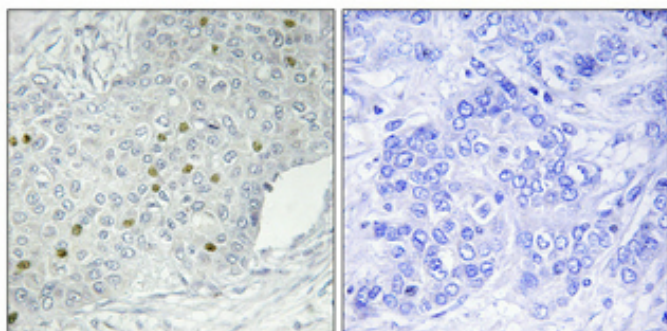
专注二抗产品

Biodragon旗下品牌

Product Images



Western Blot analysis of various cells using HPK1 Polyclonal Antibody diluted at 1 : 1000



Immunohistochemical analysis of paraffin-embedded Human breast cancer. Antibody was diluted at 1:100(4°,overnight). High-pressure and temperature Tris-EDTA,pH8.0 was used for antigen retrieval. Negative contrl (right) obtaned from antibody was pre-absorbed by immunogen peptide.