



HRI Polyclonal Antibody

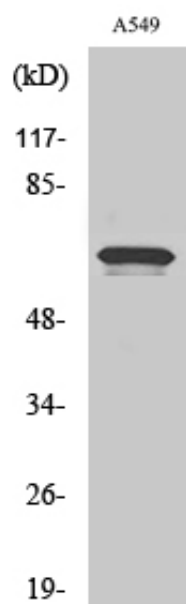
Catalog_no :	<u>AT2227</u>
Applications :	<u>WB,IHC-p,ELISA</u>
Reactivity :	<u>Human,Mouse,Monkey</u>
Category :	<u>抗原抗体</u>
Size :	<u>100µg/50µg/20µg</u>
Gene_name :	<u>EIF2AK1</u>
Protein_name :	<u>Eukaryotic translation initiation factor 2-alpha kinase 1</u>
Humangene_id :	<u>27102</u>
Humanswissprot_no :	<u>Q9BQI3</u>
Mousegene_id :	<u>15467</u>
Mouseswissprot_no :	<u>Q9Z2R9</u>
Immunogen :	<u>The antiserum was produced against synthesized peptide derived from human EIF2AK1. AA range:571-620</u>
Specificity :	<u>HRI Polyclonal Antibody detects endogenous levels of HRI protein.</u>
Formulation :	<u>Liquid in PBS containing 50% glycerol, 0.5% BSA and 0.02% sodium azide.</u>
Source :	<u>Rabbit</u>
Dilution :	<u>Western Blot: 1/500 - 1/2000. Immunohistochemistry: 1/100 - 1/300. ELISA: 1/40000. Not yet tested in other applications.</u>
Purification :	<u>The antibody was affinity-purified from rabbit antiserum by affinity-chromatography using epitope-specific immunogen.</u>
Concentration :	<u>1 mg/ml</u>
Storage_stability :	<u>-20°C/1 year</u>
Msds :	<u>MSDS_Antibody.pdf</u>
Other_name :	<u>EIF2AK1; HRI; KIAA1369; Eukaryotic translation initiation factor 2-alpha kinase 1; Heme-controlled repressor; HCR; Heme-regulated eukaryotic initiation factor eIF-2-alpha kinase; Heme-regulated inhibitor; Hemin-sensitive initiation factor 2</u>



Molecular
Weight :

71KD

Product Images



Western Blot analysis of various cells using HRI Polyclonal Antibody