



## HSC 70 Polyclonal Antibody

Catalog_no :	<u>AT2231</u>
Applications :	<u>WB,ELISA</u>
Reactivity :	<u>Human,Mouse,Rat</u>
Category :	<u>抗原抗体</u>
Size :	<u>100µg/50µg/20µg</u>
Gene_name :	<u>HSPA8</u>
Protein_name :	<u>Heat shock cognate 71 kDa protein</u>
Humangene_id :	<u><a href="#">3312</a></u>
Humanswissprot_no :	<u><a href="#">P11142</a></u>
Mousegene_id :	<u><a href="#">15481</a></u>
Mouseswissprot_no :	<u><a href="#">P63017</a></u>
Ratgene_id :	<u><a href="#">24468</a></u>
Ratswissprot_no :	<u><a href="#">P63018</a></u>
Immunogen :	<u>The antiserum was produced against synthesized peptide derived from human HSC 70. AA range:202-251</u>
Specificity :	<u>HSC 70 Polyclonal Antibody detects endogenous levels of HSC 70 protein.</u>
Formulation :	<u>Liquid in PBS containing 50% glycerol, 0.5% BSA and 0.02% sodium azide.</u>
Source :	<u>Rabbit</u>
Dilution :	<u>Western Blot: 1/500 - 1/2000. ELISA: 1/10000. Not yet tested in other applications.</u>
Purification :	<u>The antibody was affinity-purified from rabbit antiserum by affinity-chromatography using epitope-specific immunogen.</u>
Concentration :	<u>1 mg/ml</u>
Storage_stability :	<u>-20°C/1 year</u>
Msds :	<u><a href="#">MSDS_Antibody.pdf</a></u>



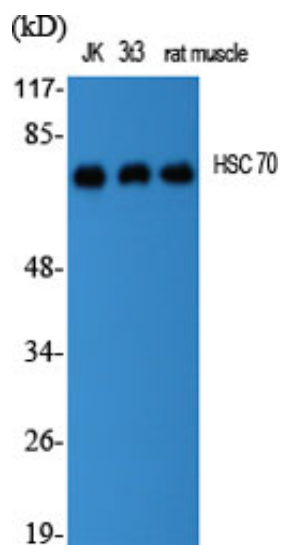
Other\_name : HSPA8; HSC70; HSP73; HSPA10; Heat shock cognate 71 kDa protein; Heat shock 70 kDa protein 8

---

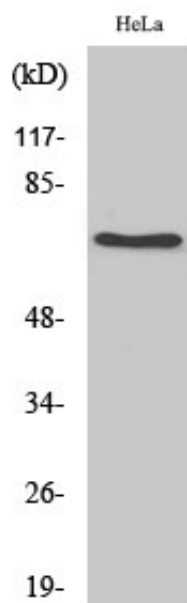
Molecular Weight : 70KD

---

## Product Images



Western Blot analysis of various cells using HSC 70 Polyclonal Antibody diluted at 1 : 2000



Western Blot analysis of HepG2 cells using HSC 70 Polyclonal Antibody diluted at 1 : 2000