

HSP70 Polyclonal Antibody

Catalog_no :	AT2242
Applications :	WB,IHC-p,ELISA
Reactivity :	Human,Mouse,Rat
Category :	抗原抗体
Size :	100µg/50µg/20µg
Gene_name :	HSPA1L/HSPA1A
Protein_name :	Heat shock 70 kDa protein 1-like/Heat shock 70 kDa protein 1A/1B
Humangene_id :	3305/3303/3304
Humanswissprot_no :	P34931/P08107
Mousegene_id :	15482/193740
Ratgene_id :	24963/24472
Ratswissprot_no :	P55063/Q07439
Immunogen :	The antiserum was produced against synthesized peptide derived from human HSPA1L. AA range:221-270
Specificity :	HSP70 Polyclonal Antibody detects endogenous levels of HSP70 protein.
Formulation :	Liquid in PBS containing 50% glycerol, 0.5% BSA and 0.02% sodium azide.
Source :	Rabbit
Dilution :	Western Blot: 1/500 - 1/2000. Immunohistochemistry: 1/100 - 1/300. ELISA: 1/40000. Not yet tested in other applications.
Purification :	The antibody was affinity-purified from rabbit antiserum by affinity-chromatography using epitope-specific immunogen.
Concentration :	1 mg/ml
Storage_stability :	-20°C/1 year
Msds :	MSDS_Antibody.pdf
Other_name :	HSPA1L; Heat shock 70 kDa protein 1-like; Heat shock 70 kDa protein 1L; Heat shock 70 kDa protein 1-Hom; HSP70-Hom; HSPA1A; HSPA1; HSPA1B; Heat shock 70 kDa protein

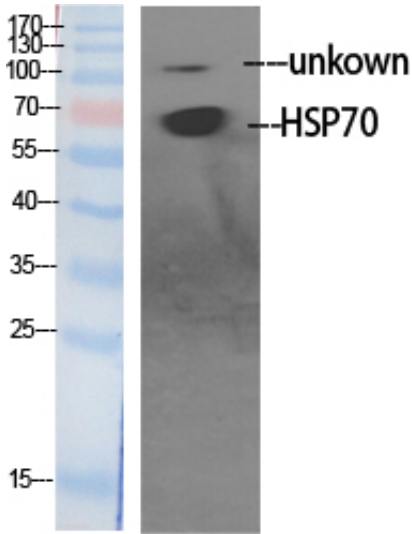


1A/1B; Heat shock 70 kDa protein 1/2; HSP70-1/HSP70-2; HSP70.1/HSP70.2

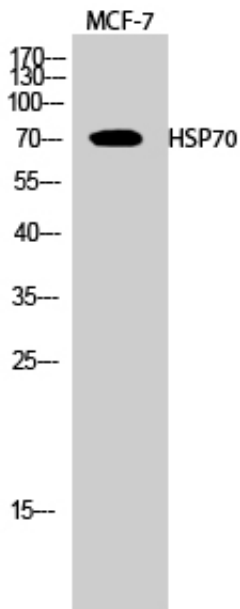
Molecular
Weight :

70KD

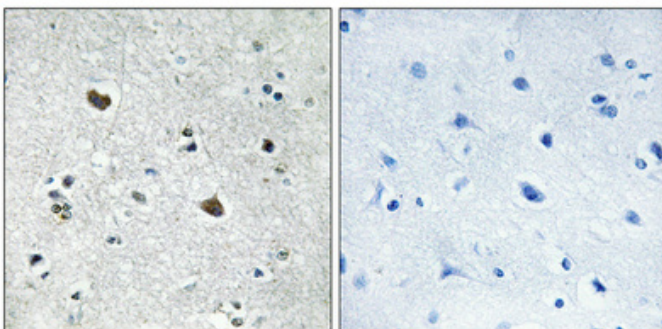
Product Images



Western Blot analysis of various cells using HSP70 Polyclonal Antibody diluted at 1 : 1000



Western Blot analysis of MCF-7 cells using HSP70 Polyclonal Antibody diluted at 1 : 1000



Immunohistochemical analysis of paraffin-embedded Human brain. Antibody was diluted at 1:100(4°,overnight). High-pressure and temperature Tris-EDTA,pH8.0 was used for antigen retrieval. Negative contrl (right) obtaned from antibody was pre-absorbed by immunogen peptide.