



HSP β 2 Polyclonal Antibody

Catalog_no :	AT2247
Applications :	WB,IHC-p,IF,ELISA
Reactivity :	Human,Mouse,Rat
Category :	抗原抗体
Size :	100 μ g/50 μ g/20 μ g
Gene_name :	HSPB2
Protein_name :	Heat shock protein beta-2
Humangene_id :	3316
Humanswissprot_no :	Q16082
Mousegene_id :	69253
Mouseswissprot_no :	Q99PR8
Ratgene_id :	161476
Ratswissprot_no :	O35878
Immunogen :	The antiserum was produced against synthesized peptide derived from human HSPB2. AA range:121-170
Specificity :	HSP β 2 Polyclonal Antibody detects endogenous levels of HSP β 2 protein.
Formulation :	Liquid in PBS containing 50% glycerol, 0.5% BSA and 0.02% sodium azide.
Source :	Rabbit
Dilution :	Western Blot: 1/500 - 1/2000. Immunohistochemistry: 1/100 - 1/300. Immunofluorescence: 1/200 - 1/1000. ELISA: 1/40000. Not yet tested in other applications.
Purification :	The antibody was affinity-purified from rabbit antiserum by affinity-chromatography using epitope-specific immunogen.
Concentration :	1 mg/ml
Storage_stability :	-20°C/1 year

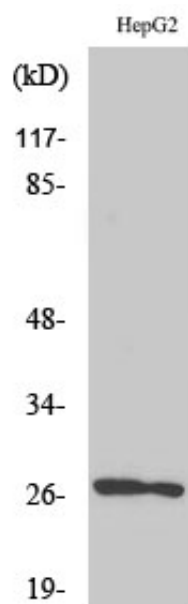


Msd : MSDS_Antibody.pdf

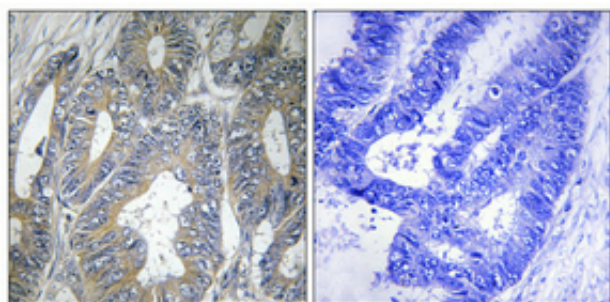
Other_name : HSPB2; Heat shock protein beta-2; HspB2; DMPK-binding protein; MKBP

Molecular Weight : 24KD

Product Images



Western Blot analysis of various cells using HSP β 2 Polyclonal Antibody



Immunohistochemical analysis of paraffin-embedded Human colon cancer. Antibody was diluted at 1:100(4 $^{\circ}$,overnight). High-pressure and temperature Tris-EDTA,pH8.0 was used for antigen retrieval. Negative contrl (right) obtaned from antibody was pre-absorbed by immunogen peptide.