

HSP10 Polyclonal Antibody

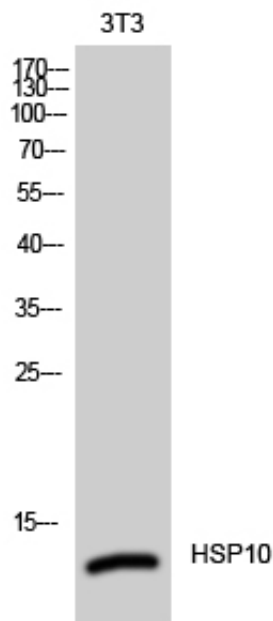
Catalog_no :	AT2248
Applications :	WB,IHC-p,IF,ELISA
Reactivity :	Human,Mouse,Rat
Category :	抗原抗体
Size :	100µg/50µg/20µg
Gene_name :	HSPE1
Protein_name :	10 kDa heat shock protein mitochondrial
Humangene_id :	3336
Humanswissprot_no :	P61604
Mousegene_id :	15528
Mouseswissprot_no :	Q64433
Ratswissprot_no :	P26772
Immunogen :	The antiserum was produced against synthesized peptide derived from human HSP10. AA range:51-100
Specificity :	HSP10 Polyclonal Antibody detects endogenous levels of HSP10 protein.
Formulation :	Liquid in PBS containing 50% glycerol, 0.5% BSA and 0.02% sodium azide.
Source :	Rabbit
Dilution :	Western Blot: 1/500 - 1/2000. Immunohistochemistry: 1/100 - 1/300. Immunofluorescence: 1/200 - 1/1000. ELISA: 1/10000. Not yet tested in other applications.
Purification :	The antibody was affinity-purified from rabbit antiserum by affinity-chromatography using epitope-specific immunogen.
Concentration :	1 mg/ml
Storage_stability :	-20°C/1 year
Msds :	MSDS_Antibody.pdf



Other_name : HSPE1; 10 kDa heat shock protein; mitochondrial; Hsp10; 10 kDa chaperonin;
Chaperonin 10; CPN10; Early-pregnancy factor; EPF

Molecular Weight : 10KD

Product Images



Western Blot analysis of 3T3 cells using HSP10 Polyclonal Antibody