

HSP105 Polyclonal Antibody

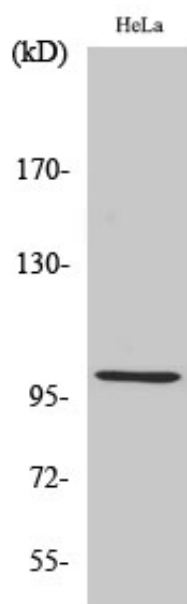
Catalog_no :	AT2249
Applications :	WB,IHC-p,IF,ELISA
Reactivity :	Human,Mouse
Category :	抗原抗体
Size :	100µg/50µg/20µg
Gene_name :	HSPH1
Protein_name :	Heat shock protein 105 kDa
Humangene_id :	10808
Humanswissprot_no :	Q92598
Mousegene_id :	15505
Mouseswissprot_no :	Q61699
Immunogen :	The antiserum was produced against synthesized peptide derived from human HSP105. AA range:791-840
Specificity :	HSP105 Polyclonal Antibody detects endogenous levels of HSP105 protein.
Formulation :	Liquid in PBS containing 50% glycerol, 0.5% BSA and 0.02% sodium azide.
Source :	Rabbit
Dilution :	Western Blot: 1/500 - 1/2000. Immunohistochemistry: 1/100 - 1/300. Immunofluorescence: 1/200 - 1/1000. ELISA: 1/10000. Not yet tested in other applications.
Purification :	The antibody was affinity-purified from rabbit antiserum by affinity-chromatography using epitope-specific immunogen.
Concentration :	1 mg/ml
Storage_stability :	-20°C/1 year
Msds :	MSDS_Antibody.pdf
Other_name :	HSPH1; HSP105; HSP110; KIAA0201; Heat shock protein 105 kDa; Antigen NY-CO-25; Heat shock 110 kDa protein



Molecular
Weight :

100KD

Product Images



Western Blot analysis of various cells using HSP105 Polyclonal Antibody