

HSP60 Polyclonal Antibody

Catalog_no :	AT2256
Applications :	WB,IHC-p,IF,ELISA
Reactivity :	Human,Mouse,Rat
Category :	抗原抗体
Size :	100µg/50µg/20µg
Gene_name :	HSPD1
Protein_name :	60 kDa heat shock protein mitochondrial
Humangene_id :	3329
Humanswissprot_no :	P10809
Mousegene_id :	15510
Mouseswissprot_no :	P63038
Ratgene_id :	63868
Ratswissprot_no :	P63039
Immunogen :	The antiserum was produced against synthesized peptide derived from human HSP60. AA range:511-560
Specificity :	HSP60 Polyclonal Antibody detects endogenous levels of HSP60 protein.
Formulation :	Liquid in PBS containing 50% glycerol, 0.5% BSA and 0.02% sodium azide.
Source :	Rabbit
Dilution :	Western Blot: 1/500 - 1/2000. Immunohistochemistry: 1/100 - 1/300. Immunofluorescence: 1/200 - 1/1000. ELISA: 1/10000. Not yet tested in other applications.
Purification :	The antibody was affinity-purified from rabbit antiserum by affinity-chromatography using epitope-specific immunogen.
Concentration :	1 mg/ml
Storage_stability :	-20°C/1 year

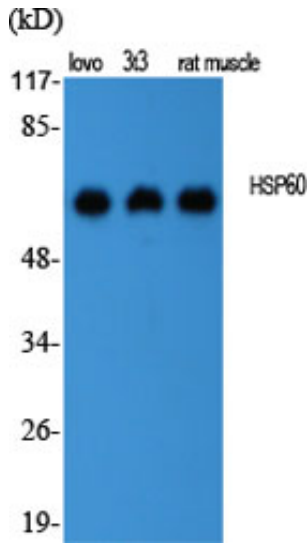


MsdS : [MSDS_Antibody.pdf](#)

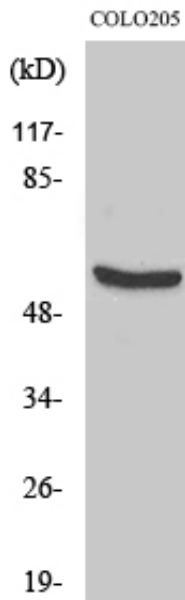
Other_name : HSPD1; HSP60; 60 kDa heat shock protein; mitochondrial; 60 kDa chaperonin; Chaperonin 60; CPN60; Heat shock protein 60; HSP-60; Hsp60; HuCHA60; Mitochondrial matrix protein P1; P60 lymphocyte protein

Molecular Weight : 68KD

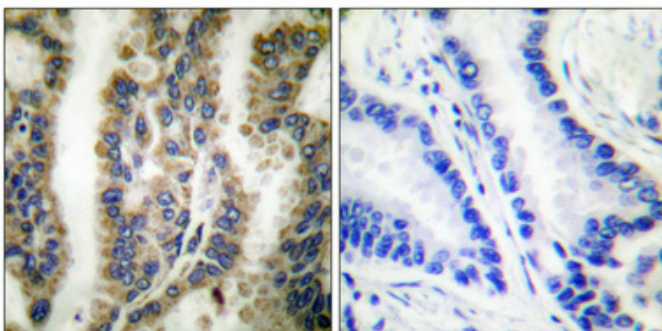
Product Images



Western Blot analysis of various cells using HSP60 Polyclonal Antibody diluted at 1 : 2000



Western Blot analysis of COLO205 cells using HSP60 Polyclonal Antibody diluted at 1 : 2000



Immunohistochemical analysis of paraffin-embedded Human lung cancer. Antibody was diluted at 1:100(4°, overnight). High-pressure and temperature Tris-EDTA, pH8.0 was used for antigen retrieval. Negative control (right) obtained from antibody was pre-absorbed by immunogen peptide.