

## HSP90A Polyclonal Antibody

Catalog_no :	AT2257
Applications :	WB,IHC-p,IF,ELISA
Reactivity :	Human,Mouse,Rat
Category :	抗原抗体
Size :	100µg/50µg/20µg
Gene_name :	HSP90AA1
Protein_name :	Heat shock protein HSP 90-alpha
Humangene_id :	<a href="#">3320</a>
Humanswissprot_no :	<a href="#">P07900</a>
Mousegene_id :	<a href="#">15519</a>
Mouseswissprot_no :	<a href="#">P07901</a>
Ratgene_id :	<a href="#">299331</a>
Ratswissprot_no :	<a href="#">P82995</a>
Immunogen :	The antiserum was produced against synthesized peptide derived from human HSP90A. AA range:683-732
Specificity :	HSP90A Polyclonal Antibody detects endogenous levels of HSP90A protein.
Formulation :	Liquid in PBS containing 50% glycerol, 0.5% BSA and 0.02% sodium azide.
Source :	Rabbit
Dilution :	Western Blot: 1/500 - 1/2000. Immunohistochemistry: 1/100 - 1/300. Immunofluorescence: 1/200 - 1/1000. ELISA: 1/40000. Not yet tested in other applications.
Purification :	The antibody was affinity-purified from rabbit antiserum by affinity-chromatography using epitope-specific immunogen.
Concentration :	1 mg/ml
Storage_stability :	-20°C/1 year

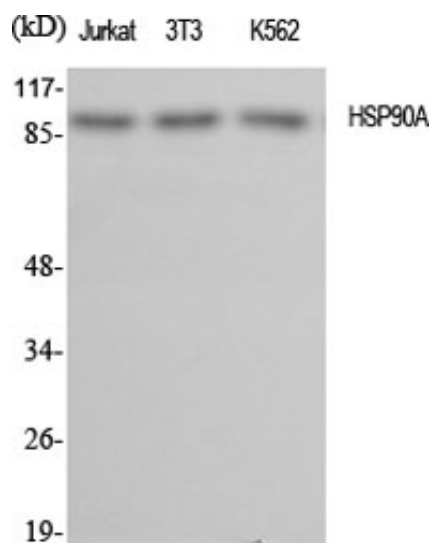


MsdS : [MSDS\\_Antibody.pdf](#)

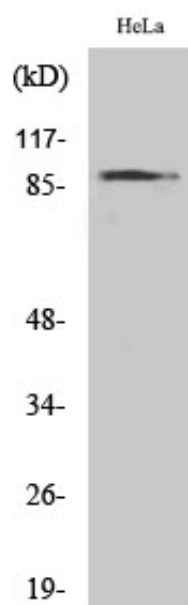
Other\_name : HSP90AA1; HSP90A; HSPC1; HSPCA; Heat shock protein HSP 90-alpha; Heat shock 86 kDa; HSP 86; HSP86; Renal carcinoma antigen NY-REN-38

Molecular Weight : 85KD

## Product Images



Western Blot analysis of various cells using HSP90A Polyclonal Antibody diluted at 1 : 2000



Western Blot analysis of HeLa cells using HSP90A Polyclonal Antibody diluted at 1 : 2000