

## HuB/D Polyclonal Antibody

Catalog_no :	<u>AT2261</u>
Applications :	<u>WB,IHC-p,IF,ELISA</u>
Reactivity :	<u>Human,Mouse,Rat</u>
Category :	<u>抗原抗体</u>
Size :	<u>100µg/50µg/20µg</u>
Gene_name :	<u>ELAVL2/ELAVL4</u>
Protein_name :	<u>ELAV-like protein 2/ELAV-like protein 4</u>
Humangene_id :	<u><a href="#">1993/1996</a></u>
Humanswissprot_no :	<u><a href="#">Q12926/P26378</a></u>
Mousegene_id :	<u><a href="#">15569/15572</a></u>
Ratgene_id :	<u><a href="#">432358</a></u>
Ratswissprot_no :	<u><a href="#">Q8CH84/O09032</a></u>
Immunogen :	<u>The antiserum was produced against synthesized peptide derived from human ELAV2/4. AA range:61-110</u>
Specificity :	<u>HuB/D Polyclonal Antibody detects endogenous levels of HuB/D protein.</u>
Formulation :	<u>Liquid in PBS containing 50% glycerol, 0.5% BSA and 0.02% sodium azide.</u>
Source :	<u>Rabbit</u>
Dilution :	<u>Western Blot: 1/500 - 1/2000. Immunohistochemistry: 1/100 - 1/300. Immunofluorescence: 1/200 - 1/1000. ELISA: 1/40000. Not yet tested in other applications.</u>
Purification :	<u>The antibody was affinity-purified from rabbit antiserum by affinity-chromatography using epitope-specific immunogen.</u>
Concentration :	<u>1 mg/ml</u>
Storage_stability :	<u>-20°C/1 year</u>
Msds :	<u><a href="#">MSDS_Antibody.pdf</a></u>
Other_name :	<u>ELAVL2; HUB; ELAV-like protein 2; ELAV-like neuronal protein 1; Hu-antigen B; HuB;</u>



Nervous system-specific RNA-binding protein Hel-N1; ELAVL4; HUD; PNEM; ELAV-like protein 4; Hu-antigen D; HuD; Paraneoplastic encephalomyelitis antigen HuD

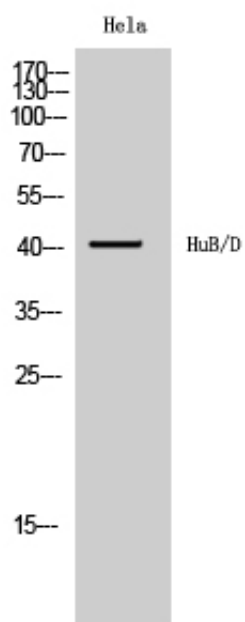
---

Molecular  
Weight :

40KD

---

## Product Images



Western Blot analysis of HeLa cells using HuB/D  
Polyclonal Antibody diluted at 1 : 1000