

HXK I Polyclonal Antibody

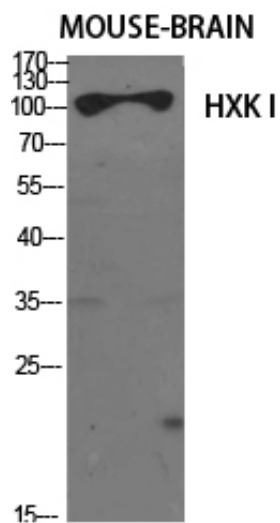
Catalog_no :	AT2265
Applications :	WB,IHC-p,IF,ELISA
Reactivity :	Human,Mouse,Rat
Category :	抗原抗体
Size :	100µg/50µg/20µg
Gene_name :	HK1
Protein_name :	Hexokinase-1
Humangene_id :	3098
Humanswissprot_no :	P19367
Mouseswissprot_no :	P17710
Ratgene_id :	25058
Ratswissprot_no :	P05708
Immunogen :	The antiserum was produced against synthesized peptide derived from human HXK1. AA range:31-80
Specificity :	HXK I Polyclonal Antibody detects endogenous levels of HXK I protein.
Formulation :	Liquid in PBS containing 50% glycerol, 0.5% BSA and 0.02% sodium azide.
Source :	Rabbit
Dilution :	Western Blot: 1/500 - 1/2000. Immunohistochemistry: 1/100 - 1/300. Immunofluorescence: 1/200 - 1/1000. ELISA: 1/20000. Not yet tested in other applications.
Purification :	The antibody was affinity-purified from rabbit antiserum by affinity-chromatography using epitope-specific immunogen.
Concentration :	1 mg/ml
Storage_stability :	-20°C/1 year
Msds :	MSDS_Antibody.pdf



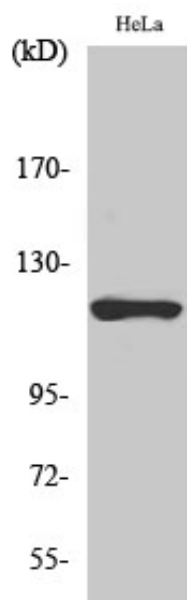
Other_name : HK1; Hexokinase-1; Brain form hexokinase; Hexokinase type I; HK I

Molecular Weight : 109KD

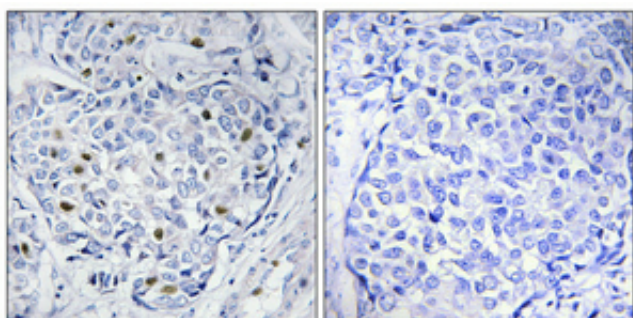
Product Images



Western Blot analysis of various cells using HXK I Polyclonal Antibody diluted at 1 : 1000



Western Blot analysis of HeLa cells using HXK I Polyclonal Antibody diluted at 1 : 1000



Immunohistochemical analysis of paraffin-embedded Human breast cancer. Antibody was diluted at 1:100(4°,overnight). High-pressure and temperature Tris-EDTA,pH8.0 was used for antigen retrieval. Negative contrl (right) obtaned from antibody was pre-absorbed by immunogen peptide.