

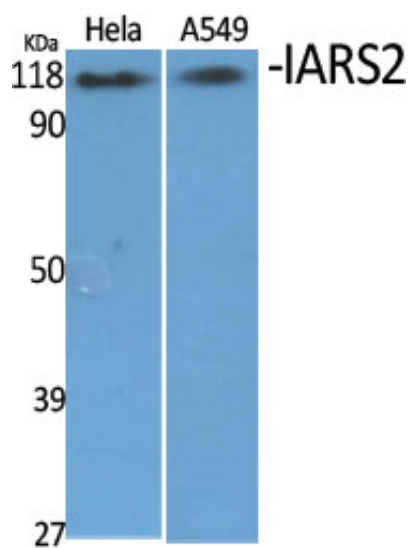
IARS2 Polyclonal Antibody

Catalog_no :	AT2267
Applications :	WB,IHC-p,IF,ELISA
Reactivity :	Human,Mouse,Monkey
Category :	抗原抗体
Size :	100µg/50µg/20µg
Gene_name :	IARS2
Protein_name :	Isoleucine--tRNA ligase mitochondrial
Humangene_id :	55699
Humanswissprot_no :	Q9NSE4
Mousegene_id :	381314
Mouseswissprot_no :	Q8BIJ6
Immunogen :	The antiserum was produced against synthesized peptide derived from human IARS2. AA range:71-120
Specificity :	IARS2 Polyclonal Antibody detects endogenous levels of IARS2 protein.
Formulation :	Liquid in PBS containing 50% glycerol, 0.5% BSA and 0.02% sodium azide.
Source :	Rabbit
Dilution :	Western Blot: 1/500 - 1/2000. Immunohistochemistry: 1/100 - 1/300. Immunofluorescence: 1/200 - 1/1000. ELISA: 1/20000. Not yet tested in other applications.
Purification :	The antibody was affinity-purified from rabbit antiserum by affinity-chromatography using epitope-specific immunogen.
Concentration :	1 mg/ml
Storage_stability :	-20°C/1 year
Msds :	MSDS_Antibody.pdf
Other_name :	IARS2; Isoleucine--tRNA ligase; mitochondrial; Isoleucyl-tRNA synthetase; IleRS
Molecular	114KD

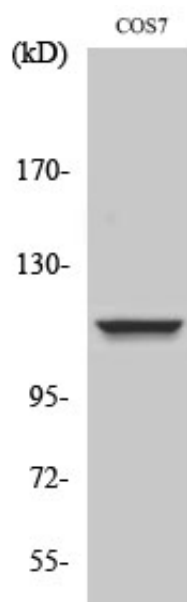


Weight :

Product Images



Western Blot analysis of various cells using IARS2
Polyclonal Antibody diluted at 1 : 2000



Western Blot analysis of NIH-3T3 cells using IARS2
Polyclonal Antibody diluted at 1 : 2000