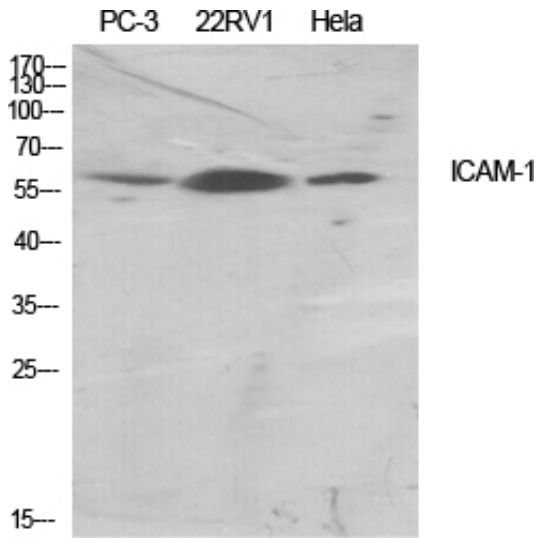


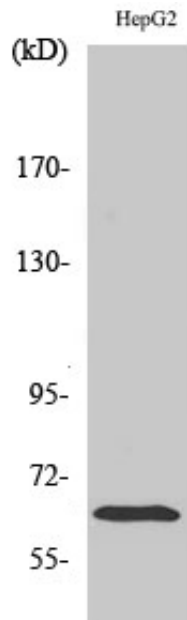
## ICAM-1 Polyclonal Antibody

Catalog_no :	AT2269
Applications :	WB,IHC-p,ELISA
Reactivity :	Human
Category :	抗原抗体
Size :	100µg/50µg/20µg
Gene_name :	ICAM1
Protein_name :	Intercellular adhesion molecule 1
Humangene_id :	<a href="#">3383</a>
Humanswissprot_no :	<a href="#">P05362</a>
Immunogen :	The antiserum was produced against synthesized peptide derived from human ICAM-1. AA range:479-528
Specificity :	ICAM-1 Polyclonal Antibody detects endogenous levels of ICAM-1 protein.
Formulation :	Liquid in PBS containing 50% glycerol, 0.5% BSA and 0.02% sodium azide.
Source :	Rabbit
Dilution :	Western Blot: 1/500 - 1/2000. ELISA: 1/10000. Not yet tested in other applications.
Purification :	The antibody was affinity-purified from rabbit antiserum by affinity-chromatography using epitope-specific immunogen.
Concentration :	1 mg/ml
Storage_stability :	-20°C/1 year
Msds :	MSDS_Antibody.pdf
Other_name :	ICAM1; Intercellular adhesion molecule 1; ICAM-1; Major group rhinovirus receptor; CD antigen CD54
Molecular Weight :	58KD

## Product Images



Western Blot analysis of various cells using ICAM-1 Polyclonal Antibody diluted at 1 : 500



Western Blot analysis of HepG2 cells using ICAM-1 Polyclonal Antibody diluted at 1 : 500