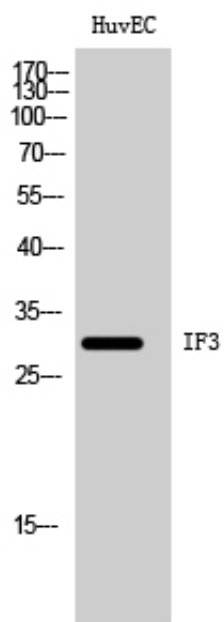




IF3 Polyclonal Antibody

Catalog_no :	AT2273
Applications :	WB,IHC-p,ELISA
Reactivity :	Human
Category :	抗原抗体
Size :	100µg/50µg/20µg
Gene_name :	MTIF3
Protein_name :	Translation initiation factor IF-3 mitochondrial
Humangene_id :	219402
Humanswissprot_no :	Q9H2K0
Immunogen :	The antiserum was produced against synthesized peptide derived from human MTIF3. AA range:69-118
Specificity :	IF3 Polyclonal Antibody detects endogenous levels of IF3 protein.
Formulation :	Liquid in PBS containing 50% glycerol, 0.5% BSA and 0.02% sodium azide.
Source :	Rabbit
Dilution :	Western Blot: 1/500 - 1/2000. Immunohistochemistry: 1/100 - 1/300. ELISA: 1/40000. Not yet tested in other applications.
Purification :	The antibody was affinity-purified from rabbit antiserum by affinity-chromatography using epitope-specific immunogen.
Concentration :	1 mg/ml
Storage_stability :	-20°C/1 year
Msds :	MSDS_Antibody.pdf
Other_name :	MTIF3; DC38; Translation initiation factor IF-3; mitochondrial; IF-3(Mt); IF-3Mt; IF3(mt); IF3mt
Molecular Weight :	30KD

Product Images



Western Blot analysis of HuvEC cells using IF3 Polyclonal Antibody diluted at 1 : 500