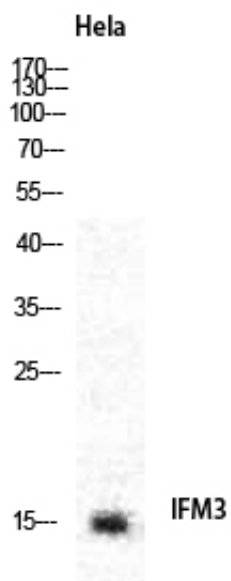




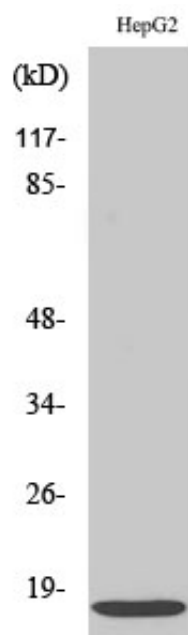
IFITM3 Polyclonal Antibody

Catalog_no :	AT2277
Applications :	WB,IF,ELISA
Reactivity :	Human
Category :	抗原抗体
Size :	100µg/50µg/20µg
Gene_name :	IFITM3
Protein_name :	Interferon-induced transmembrane protein 3
Humangene_id :	10410
Humanswissprot_no :	Q01628
Immunogen :	The antiserum was produced against synthesized peptide derived from human IFM3. AA range:1-50
Specificity :	IFITM3 Polyclonal Antibody detects endogenous levels of IFITM3 protein.
Formulation :	Liquid in PBS containing 50% glycerol, 0.5% BSA and 0.02% sodium azide.
Source :	Rabbit
Dilution :	Western Blot: 1/500 - 1/2000. Immunofluorescence: 1/200 - 1/1000. ELISA: 1/40000. Not yet tested in other applications.
Purification :	The antibody was affinity-purified from rabbit antiserum by affinity-chromatography using epitope-specific immunogen.
Concentration :	1 mg/ml
Storage_stability :	-20°C/1 year
Msds :	MSDS_Antibody.pdf
Other_name :	IFITM3; Interferon-induced transmembrane protein 3; Dispanin subfamily A member 2b; DSPA2b; Interferon-inducible protein 1-8U
Molecular Weight :	15KD

Product Images



Western Blot analysis of various cells using IFITM3
Polyclonal Antibody diluted at 1 : 2000



Western Blot analysis of HeLa cells using IFITM3
Polyclonal Antibody diluted at 1 : 2000