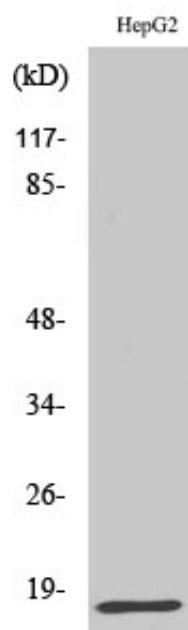




IFN- γ Polyclonal Antibody

| | |
|---------------------|--|
| Catalog_no : | AT2279 |
| Applications : | WB,IHC-p,ELISA |
| Reactivity : | Human |
| Category : | 抗原抗体 |
| Size : | 100 μ g/50 μ g/20 μ g |
| Gene_name : | IFNG |
| Protein_name : | Interferon gamma |
| Humangene_id : | 3458 |
| Humanswissprot_no : | P01579 |
| Immunogen : | The antiserum was produced against synthesized peptide derived from human IFN-gamma. AA range:20-69 |
| Specificity : | IFN- γ Polyclonal Antibody detects endogenous levels of IFN- γ protein. |
| Formulation : | Liquid in PBS containing 50% glycerol, 0.5% BSA and 0.02% sodium azide. |
| Source : | Rabbit |
| Dilution : | Western Blot: 1/500 - 1/2000. Immunohistochemistry: 1/100 - 1/300. ELISA: 1/40000. Not yet tested in other applications. |
| Purification : | The antibody was affinity-purified from rabbit antiserum by affinity-chromatography using epitope-specific immunogen. |
| Concentration : | 1 mg/ml |
| Storage_stability : | -20°C/1 year |
| Msds : | MSDS_Antibody.pdf |
| Other_name : | IFNG; Interferon gamma; IFN-gamma; Immune interferon |
| Molecular Weight : | 17KD |

Product Images



Western Blot analysis of various cells using IFN- γ
Polyclonal Antibody diluted at 1 : 1000