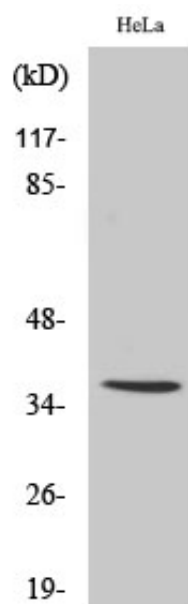




IgA Polyclonal Antibody

Catalog_no :	AT2281
Applications :	WB,IHC-p,ELISA
Reactivity :	Human
Category :	抗原抗体
Size :	100µg/50µg/20µg
Gene_name :	IGHA1/IGHA2
Protein_name :	Ig alpha-1 chain C region/Ig alpha-2 chain C region
Humangene_id :	3493/3494
Humanswissprot_no :	P01876/P01877
Immunogen :	The antiserum was produced against synthesized peptide derived from human IgA. AA range:227-276
Specificity :	IgA Polyclonal Antibody detects endogenous levels of IgA protein.
Formulation :	Liquid in PBS containing 50% glycerol, 0.5% BSA and 0.02% sodium azide.
Source :	Rabbit
Dilution :	Western Blot: 1/500 - 1/2000. Immunohistochemistry: 1/100 - 1/300. ELISA: 1/40000. Not yet tested in other applications.
Purification :	The antibody was affinity-purified from rabbit antiserum by affinity-chromatography using epitope-specific immunogen.
Concentration :	1 mg/ml
Storage_stability :	-20°C/1 year
Msds :	MSDS_Antibody.pdf
Other_name :	IGHA1; Ig alpha-1 chain C region; IGH A2; Ig alpha-2 chain C region
Molecular Weight :	38KD

Product Images



Western Blot analysis of various cells using IgA Polyclonal Antibody