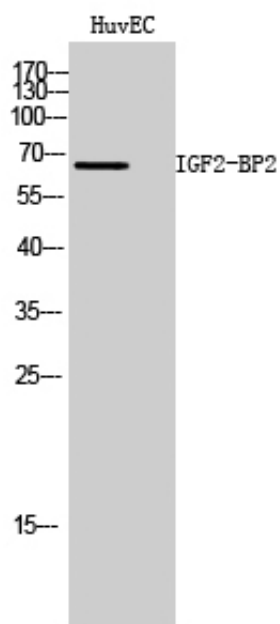


IGF2-BP2 Polyclonal Antibody

Catalog_no :	AT2284
Applications :	WB,ELISA
Reactivity :	Human
Category :	抗原抗体
Size :	100µg/50µg/20µg
Gene_name :	IGF2BP2
Protein_name :	Insulin-like growth factor 2 mRNA-binding protein 2
Humangene_id :	10644
Humanswissprot_no :	Q9Y6M1
Immunogen :	The antiserum was produced against synthesized peptide derived from human IGF2BP2. AA range:141-190
Specificity :	IGF2-BP2 Polyclonal Antibody detects endogenous levels of IGF2-BP2 protein.
Formulation :	Liquid in PBS containing 50% glycerol, 0.5% BSA and 0.02% sodium azide.
Source :	Rabbit
Dilution :	Western Blot: 1/500 - 1/2000. ELISA: 1/20000. Not yet tested in other applications.
Purification :	The antibody was affinity-purified from rabbit antiserum by affinity-chromatography using epitope-specific immunogen.
Concentration :	1 mg/ml
Storage_stability :	-20°C/1 year
Msds :	MSDS_Antibody.pdf
Other_name :	IGF2BP2; IMP2; VICKZ2; Insulin-like growth factor 2 mRNA-binding protein 2; IGF2 mRNA-binding protein 2; IMP-2; Hepatocellular carcinoma autoantigen p62; IGF-II mRNA-binding protein 2; VICKZ family member 2
Molecular Weight :	65KD

Product Images



Western Blot analysis of HuvEC cells using IGF2-BP2 Polyclonal Antibody