



IGF-I Polyclonal Antibody

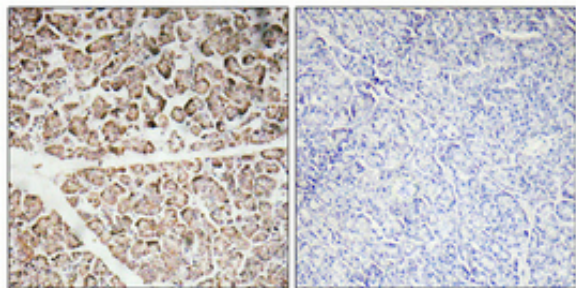
Catalog_no :	AT2288
Applications :	IHC-p,ELISA
Reactivity :	Human,Mouse,Rat
Category :	抗原抗体
Size :	100µg/50µg/20µg
Gene_name :	IGF1
Protein_name :	Insulin-like growth factor I
Humangene_id :	3479
Humanswissprot_no :	P01343/P05019
Mousegene_id :	16000
Ratgene_id :	24482
Ratswissprot_no :	P08025
Immunogen :	The antiserum was produced against synthesized peptide derived from human IGF-I. AA range:100-149
Specificity :	IGF-I Polyclonal Antibody detects endogenous levels of IGF-I protein.
Formulation :	Liquid in PBS containing 50% glycerol, 0.5% BSA and 0.02% sodium azide.
Source :	Rabbit
Dilution :	Immunohistochemistry: 1/100 - 1/300. ELISA: 1/10000. Not yet tested in other applications.
Purification :	The antibody was affinity-purified from rabbit antiserum by affinity-chromatography using epitope-specific immunogen.
Concentration :	1 mg/ml
Storage_stability :	-20°C/1 year
Msds :	MSDS_Antibody.pdf
Other_name :	IBP1; IGF-IA; IGF1A; IGFI; insulin-like growth factor 1; insulin-like growth factor IA; mechano growth factor; MGF; somatomedin C



专注二抗产品

Biodragon旗下品牌

Product Images



Immunohistochemical analysis of paraffin-embedded Human pancreas. Antibody was diluted at 1:100(4°,overnight). High-pressure and temperature Tris-EDTA,pH8.0 was used for antigen retrieval. Negative contrl (right) obtaned from antibody was pre-absorbed by immunogen peptide.