



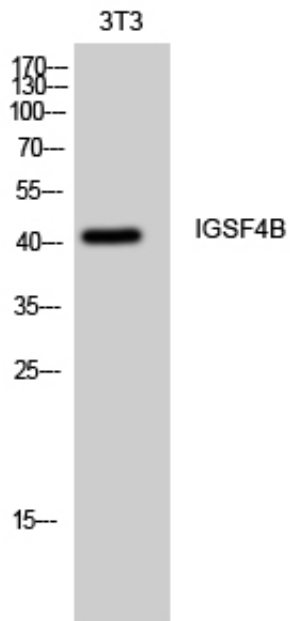
IGSF4B Polyclonal Antibody

Catalog_no :	AT2294
Applications :	WB,IHC-p,IF,ELISA
Reactivity :	Human,Mouse,Rat
Category :	抗原抗体
Size :	100µg/50µg/20µg
Gene_name :	CADM3
Protein_name :	Cell adhesion molecule 3
Humangene_id :	57863
Humanswissprot_no :	Q8N126
Mousegene_id :	94332
Mouseswissprot_no :	Q99N28
Ratgene_id :	360882
Ratswissprot_no :	Q1WIM3
Immunogen :	The antiserum was produced against synthesized peptide derived from human CADM3. AA range:141-190
Specificity :	IGSF4B Polyclonal Antibody detects endogenous levels of IGSF4B protein.
Formulation :	Liquid in PBS containing 50% glycerol, 0.5% BSA and 0.02% sodium azide.
Source :	Rabbit
Dilution :	Western Blot: 1/500 - 1/2000. Immunohistochemistry: 1/100 - 1/300. Immunofluorescence: 1/200 - 1/1000. ELISA: 1/5000. Not yet tested in other applications.
Purification :	The antibody was affinity-purified from rabbit antiserum by affinity-chromatography using epitope-specific immunogen.
Concentration :	1 mg/ml
Storage_stability :	-20°C/1 year



MsdS :	MSDS_Antibody.pdf
Other_name :	CADM3; IGSF4B; NECL1; SYNCAM3; TSLL1; Cell adhesion molecule 3; Brain immunoglobulin receptor; Immunoglobulin superfamily member 4B; IgSF4B; Nectin-like protein 1; NECL-1; Synaptic cell adhesion molecule 3; SynCAM3; TSLC1-like protein 1; TS
Molecular Weight :	43KD

Product Images



Western Blot analysis of 3T3 cells using IGSF4B Polyclonal Antibody