

## IGSF4D Polyclonal Antibody

Catalog_no :	AT2296
Applications :	WB,IHC-p,IF,ELISA
Reactivity :	Human,Mouse,Rat
Category :	抗原抗体
Size :	100µg/50µg/20µg
Gene_name :	CADM2
Protein_name :	Cell adhesion molecule 2
Humangene_id :	<a href="#">253559</a>
Humanswissprot_no :	<a href="#">Q8N3J6</a>
Mousegene_id :	<a href="#">239857</a>
Mouseswissprot_no :	<a href="#">Q8BLQ9</a>
Ratgene_id :	<a href="#">360687</a>
Ratswissprot_no :	<a href="#">Q1WIM2</a>
Immunogen :	The antiserum was produced against synthesized peptide derived from human CADM2. AA range:131-180
Specificity :	IGSF4D Polyclonal Antibody detects endogenous levels of IGSF4D protein.
Formulation :	Liquid in PBS containing 50% glycerol, 0.5% BSA and 0.02% sodium azide.
Source :	Rabbit
Dilution :	Western Blot: 1/500 - 1/2000. Immunohistochemistry: 1/100 - 1/300. Immunofluorescence: 1/200 - 1/1000. ELISA: 1/10000. Not yet tested in other applications.
Purification :	The antibody was affinity-purified from rabbit antiserum by affinity-chromatography using epitope-specific immunogen.
Concentration :	1 mg/ml
Storage_stability :	-20°C/1 year

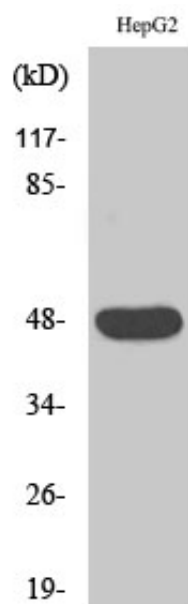


MsdS : MSDS\_Antibody.pdf

Other\_name : CADM2; IGSF4D; NECL3; Cell adhesion molecule 2; Immunoglobulin superfamily member 4D; IgSF4D; Nectin-like protein 3; NECL-3; Synaptic cell adhesion molecule 2; SynCAM 2

Molecular Weight : 47KD

## Product Images



Western Blot analysis of various cells using IGSF4D Polyclonal Antibody