

IKK α Polyclonal Antibody

Catalog_no :	AT2300
Applications :	WB,IHC-p,ELISA
Reactivity :	Human,Mouse,Rat
Category :	抗原抗体
Size :	100 μ g/50 μ g/20 μ g
Gene_name :	CHUK
Protein_name :	Inhibitor of nuclear factor kappa-B kinase subunit alpha
Humangene_id :	1147
Humanswissprot_no :	O15111
Mouseswissprot_no :	Q60680
Immunogen :	The antiserum was produced against synthesized peptide derived from human IKK-alpha. AA range:15-64
Specificity :	IKK α Polyclonal Antibody detects endogenous levels of IKK α protein.
Formulation :	Liquid in PBS containing 50% glycerol, 0.5% BSA and 0.02% sodium azide.
Source :	Rabbit
Dilution :	Western Blot: 1/500 - 1/2000. Immunohistochemistry: 1/100 - 1/300. ELISA: 1/10000. Not yet tested in other applications.
Purification :	The antibody was affinity-purified from rabbit antiserum by affinity-chromatography using epitope-specific immunogen.
Concentration :	1 mg/ml
Storage_stability :	-20°C/1 year
Msds :	MSDS_Antibody.pdf
Other_name :	CHUK; IKKA; TCF16; Inhibitor of nuclear factor kappa-B kinase subunit alpha; I-kappa-B kinase alpha; IKK-A; IKK-alpha; IkbKA; IkappaB kinase; Conserved helix-loop-helix ubiquitous kinase; I-kappa-B kinase 1; IKK1; Nuclear factor NF-kappa-B
Molecular Weight :	85KD

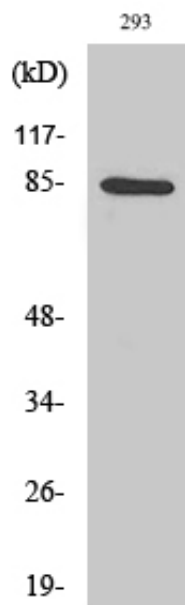
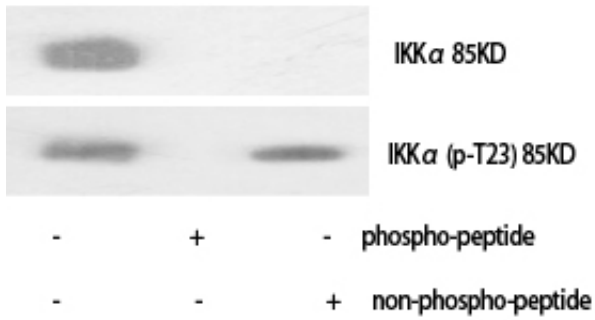


专注二抗产品

Biodragon旗下品牌

Product Images

Western Blot analysis of various cells using IKK α Polyclonal Antibody diluted at 1 : 1000



Western Blot analysis of 293 cells using IKK α Polyclonal Antibody diluted at 1 : 1000