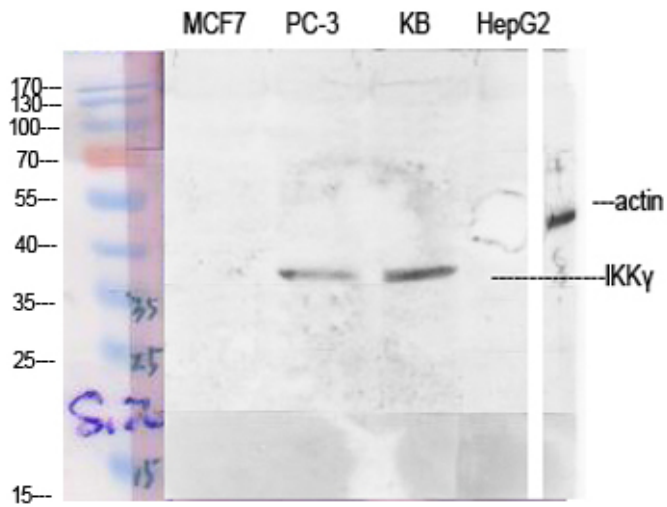


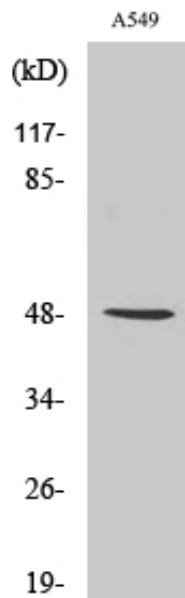
## IKKy Polyclonal Antibody

Catalog_no :	AT2307
Applications :	WB,IHC-p,IF,ELISA
Reactivity :	Human
Category :	抗原抗体
Size :	100µg/50µg/20µg
Gene_name :	IKBKG
Protein_name :	NF-kappa-B essential modulator
Humangene_id :	<a href="#">8517</a>
Humanswissprot_no :	<a href="#">Q9Y6K9</a>
Immunogen :	The antiserum was produced against synthesized peptide derived from human IKK-gamma. AA range:51-100
Specificity :	IKKy Polyclonal Antibody detects endogenous levels of IKKy protein.
Formulation :	Liquid in PBS containing 50% glycerol, 0.5% BSA and 0.02% sodium azide.
Source :	Rabbit
Dilution :	Western Blot: 1/500 - 1/2000. Immunohistochemistry: 1/100 - 1/300. Immunofluorescence: 1/200 - 1/1000. ELISA: 1/20000. Not yet tested in other applications.
Purification :	The antibody was affinity-purified from rabbit antiserum by affinity-chromatography using epitope-specific immunogen.
Concentration :	1 mg/ml
Storage_stability :	-20°C/1 year
Msds :	<a href="#">MSDS_Antibody.pdf</a>
Other_name :	IKBKG; FIP3; NEMO; NF-kappa-B essential modulator; NEMO; FIP-3; IκB kinase-associated protein 1; IKKAP1; Inhibitor of nuclear factor kappa-B kinase subunit gamma; I-kappa-B kinase subunit gamma; IKK-gamma; IKKG; IκB kinase subunit gamma; NF
Molecular Weight :	43KD

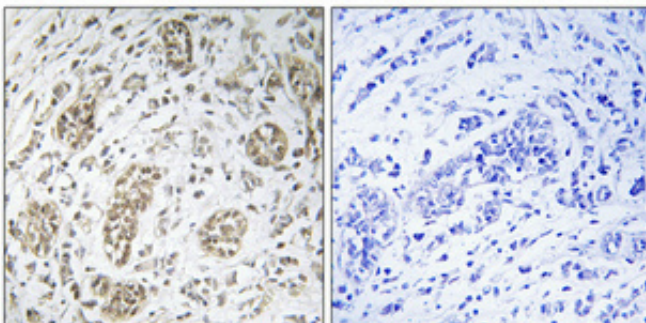
## Product Images



Western Blot analysis of various cells using IKKy Polyclonal Antibody diluted at 1 : 1000



Western Blot analysis of RAW264.7 cells using IKKy Polyclonal Antibody diluted at 1 : 1000



Immunohistochemical analysis of paraffin-embedded Human breast cancer. Antibody was diluted at 1:100(4°,overnight). High-pressure and temperature Tris-EDTA,pH8.0 was used for antigen retrieval. Negative contrl (right) obtaned from antibody was pre-absorbed by immunogen peptide.