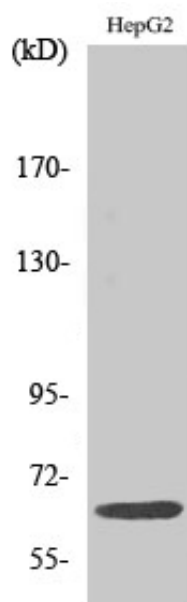


IL-10R α Polyclonal Antibody

Catalog_no :	AT2308
Applications :	WB,IF,ELISA
Reactivity :	Human
Category :	抗原抗体
Size :	100 μ g/50 μ g/20 μ g
Gene_name :	IL10RA
Protein_name :	Interleukin-10 receptor subunit alpha
Humangene_id :	3587
Humanswissprot_no :	Q13651
Immunogen :	The antiserum was produced against synthesized peptide derived from human IL-10R alpha. AA range:462-511
Specificity :	IL-10R α Polyclonal Antibody detects endogenous levels of IL-10R α protein.
Formulation :	Liquid in PBS containing 50% glycerol, 0.5% BSA and 0.02% sodium azide.
Source :	Rabbit
Dilution :	Western Blot: 1/500 - 1/2000. Immunofluorescence: 1/200 - 1/1000. ELISA: 1/10000. Not yet tested in other applications.
Purification :	The antibody was affinity-purified from rabbit antiserum by affinity-chromatography using epitope-specific immunogen.
Concentration :	1 mg/ml
Storage_stability :	-20°C/1 year
Msds :	MSDS_Antibody.pdf
Other_name :	IL10RA; IL10R; Interleukin-10 receptor subunit alpha; IL-10 receptor subunit alpha; IL-10R subunit alpha; IL-10RA; CDw210a; Interleukin-10 receptor subunit 1; IL-10R subunit 1; IL-10R1; CD antigen CD210
Molecular Weight :	63KD

Product Images



Western Blot analysis of various cells using IL-10Ra Polyclonal Antibody