

## IL-12A Polyclonal Antibody

Catalog_no :	<u>AT2311</u>
Applications :	<u>WB,IHC-p,ELISA</u>
Reactivity :	<u>Human,Mouse,Rat</u>
Category :	<u>抗原抗体</u>
Size :	<u>100µg/50µg/20µg</u>
Gene_name :	<u>IL12A</u>
Protein_name :	<u>Interleukin-12 subunit alpha</u>
Humangene_id :	<u><a href="#">3592</a></u>
Humanswissprot_no :	<u><a href="#">P29459</a></u>
Mousegene_id :	<u><a href="#">16159</a></u>
Mouseswissprot_no :	<u><a href="#">P43431</a></u>
Ratgene_id :	<u><a href="#">84405</a></u>
Ratswissprot_no :	<u><a href="#">Q9R103</a></u>
Immunogen :	<u>The antiserum was produced against synthesized peptide derived from human IL-12A. AA range:16-65</u>
Specificity :	<u>IL-12A Polyclonal Antibody detects endogenous levels of IL-12A protein.</u>
Formulation :	<u>Liquid in PBS containing 50% glycerol, 0.5% BSA and 0.02% sodium azide.</u>
Source :	<u>Rabbit</u>
Dilution :	<u>Western Blot: 1/500 - 1/2000.IHC-p:1:50-300 ELISA: 1/20000. Not yet tested in other applications.</u>
Purification :	<u>The antibody was affinity-purified from rabbit antiserum by affinity-chromatography using epitope-specific immunogen.</u>
Concentration :	<u>1 mg/ml</u>
Storage_stability :	<u>-20°C/1 year</u>
Msds :	<u>MSDS_Antibody.pdf</u>



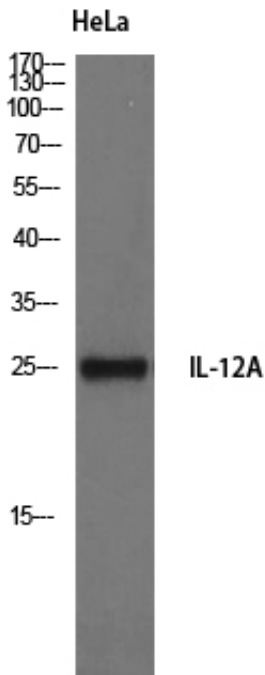
Other\_name : IL12A; NKSF1; Interleukin-12 subunit alpha; IL-12A; Cytotoxic lymphocyte maturation factor 35 kDa subunit; CLMF p35; IL-12 subunit p35; NK cell stimulatory factor chain 1; NKSF1

---

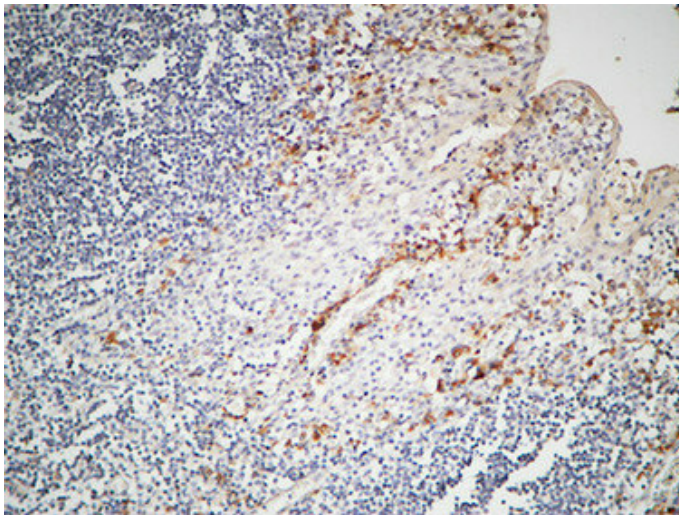
Molecular Weight : 25KD

---

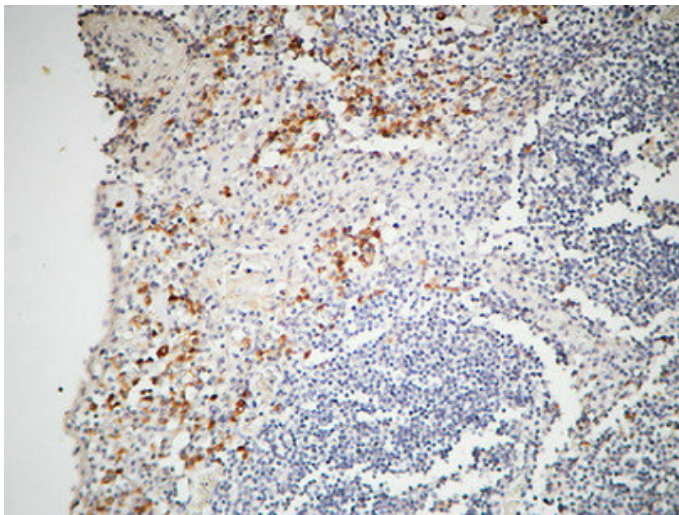
## Product Images



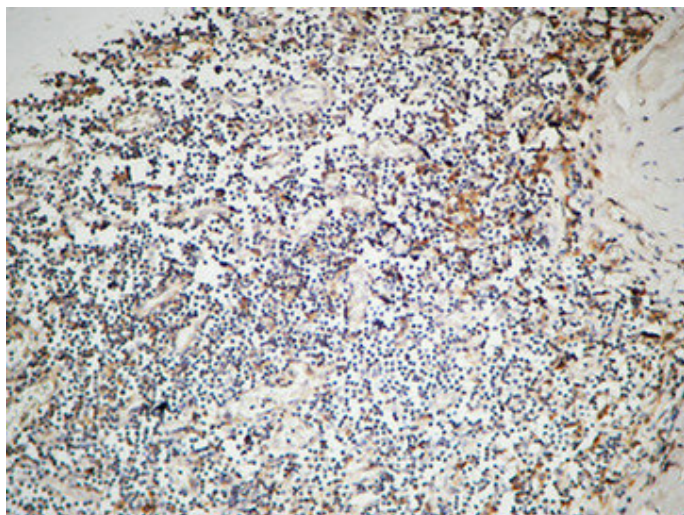
Western Blot analysis of HeLa cells using IL-12A Polyclonal Antibody



Immunohistochemical analysis of paraffin-embedded Human Amygdala. 1, Antibody was diluted at 1:200(4°, overnight). 2, High-pressure and temperature EDTA, pH8.0 was used for antigen retrieval. 3, Secondary antibody was diluted at 1:200(room temperature, 30min).



Immunohistochemical analysis of paraffin-embedded Human Amygdala. 1, Antibody was diluted at 1:200(4°, overnight). 2, High-pressure and temperature EDTA, pH8.0 was used for antigen retrieval. 3, Secondary antibody was diluted at 1:200(room temperature, 30min).



Immunohistochemical analysis of paraffin-embedded Human Amygdala. 1, Antibody was diluted at 1:200(4°,overnight). 2, High-pressure and temperature EDTA, pH8.0 was used for antigen retrieval. 3,Secondary antibody was diluted at 1:200(room temperature, 30min).