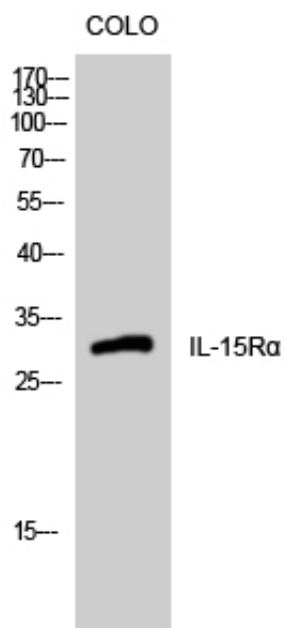




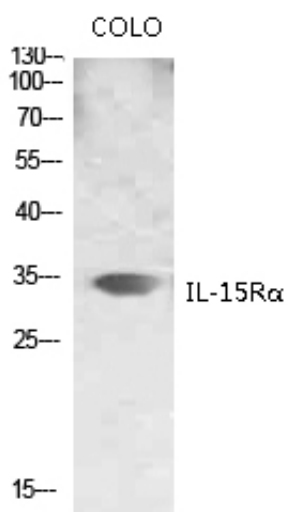
## IL-15R $\alpha$ Polyclonal Antibody

Catalog_no :	<u>AT2315</u>
Applications :	<u>WB,ELISA</u>
Reactivity :	<u>Human,Rat</u>
Category :	<u>抗原抗体</u>
Size :	<u>100<math>\mu</math>g/50<math>\mu</math>g/20<math>\mu</math>g</u>
Gene_name :	<u>IL15RA</u>
Protein_name :	<u>Interleukin-15 receptor subunit alpha</u>
Humangene_id :	<u><a href="#">3601</a></u>
Humanswissprot_no :	<u><a href="#">Q13261</a></u>
Immunogen :	<u>The antiserum was produced against synthesized peptide derived from human IL15RA. AA range:99-148</u>
Specificity :	<u>IL-15R<math>\alpha</math> Polyclonal Antibody detects endogenous levels of IL-15R<math>\alpha</math> protein.</u>
Formulation :	<u>Liquid in PBS containing 50% glycerol, 0.5% BSA and 0.02% sodium azide.</u>
Source :	<u>Rabbit</u>
Dilution :	<u>Western Blot: 1/500 - 1/2000. ELISA: 1/40000. Not yet tested in other applications.</u>
Purification :	<u>The antibody was affinity-purified from rabbit antiserum by affinity-chromatography using epitope-specific immunogen.</u>
Concentration :	<u>1 mg/ml</u>
Storage_stability :	<u>-20°C/1 year</u>
Msds :	<u>MSDS_Antibody.pdf</u>
Other_name :	<u>IL15RA; Interleukin-15 receptor subunit alpha; IL-15 receptor subunit alpha; IL-15R-alpha; IL-15RA; CD antigen CD215</u>
Molecular Weight :	<u>32KD</u>

## Product Images



Western Blot analysis of COLO cells using IL-15Rα Polyclonal Antibody



Western blot analysis of various lysis using IL-15Rα Polyclonal Antibody. Secondary antibody was diluted at 1:20000