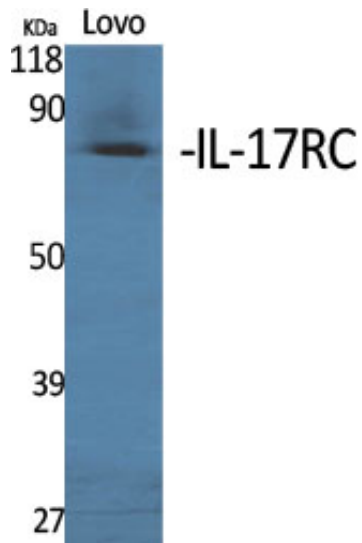




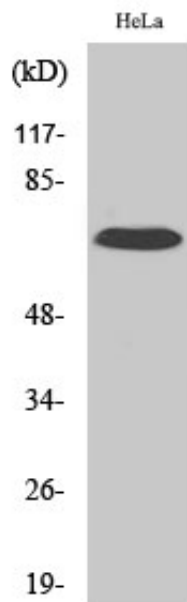
IL-17RC Polyclonal Antibody

Catalog_no :	AT2317
Applications :	WB,ELISA
Reactivity :	Human
Category :	抗原抗体
Size :	100µg/50µg/20µg
Gene_name :	IL17RC
Protein_name :	Interleukin-17 receptor C
Humangene_id :	84818
Humanswissprot_no :	Q8NAC3
Immunogen :	The antiserum was produced against synthesized peptide derived from human IL17RC. AA range:721-770
Specificity :	IL-17RC Polyclonal Antibody detects endogenous levels of IL-17RC protein.
Formulation :	Liquid in PBS containing 50% glycerol, 0.5% BSA and 0.02% sodium azide.
Source :	Rabbit
Dilution :	Western Blot: 1/500 - 1/2000. ELISA: 1/20000. Not yet tested in other applications.
Purification :	The antibody was affinity-purified from rabbit antiserum by affinity-chromatography using epitope-specific immunogen.
Concentration :	1 mg/ml
Storage_stability :	-20°C/1 year
Msds :	MSDS_Antibody.pdf
Other_name :	IL17RC; Interleukin-17 receptor C; IL-17 receptor C; IL-17RC; Interleukin-17 receptor homolog; IL17Rhom; Interleukin-17 receptor-like protein; IL-17RL; ZcytoR14
Molecular Weight :	70KD

Product Images



Western Blot analysis of various cells using IL-17RC Polyclonal Antibody



Western Blot analysis of HuvEc cells using IL-17RC Polyclonal Antibody