



## IL-2 Polyclonal Antibody

Catalog_no :	<u>AT2323</u>
Applications :	<u>WB,IHC-p,ELISA</u>
Reactivity :	<u>Human,Rat</u>
Category :	<u>抗原抗体</u>
Size :	<u>100µg/50µg/20µg</u>
Gene_name :	<u>IL2</u>
Protein_name :	<u>Interleukin-2</u>
Humangene_id :	<u><a href="#">3558</a></u>
Humanswissprot_no :	<u><a href="#">P60568</a></u>
Ratgene_id :	<u><a href="#">116562</a></u>
Ratswissprot_no :	<u><a href="#">P17108</a></u>
Immunogen :	<u>The antiserum was produced against synthesized peptide derived from human IL-2. AA range:16-65</u>
Specificity :	<u>IL-2 Polyclonal Antibody detects endogenous levels of IL-2 protein.</u>
Formulation :	<u>Liquid in PBS containing 50% glycerol, 0.5% BSA and 0.02% sodium azide.</u>
Source :	<u>Rabbit</u>
Dilution :	<u>IHC-p: 100-300.Western Blot: 1/500 - 1/2000. ELISA: 1/5000. Not yet tested in other applications.</u>
Purification :	<u>The antibody was affinity-purified from rabbit antiserum by affinity-chromatography using epitope-specific immunogen.</u>
Concentration :	<u>1 mg/ml</u>
Storage_stability :	<u>-20°C/1 year</u>
Msds :	<u><a href="#">MSDS_Antibody.pdf</a></u>
Other_name :	<u>IL2; Interleukin-2; IL-2; T-cell growth factor; TCGF; Aldesleukin</u>
Molecular Weight :	<u>15KD</u>

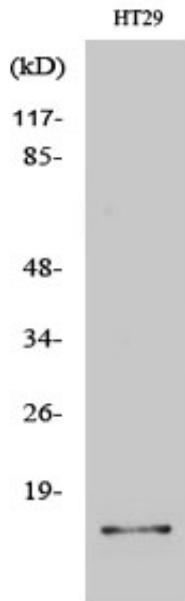


**专注二抗产品**

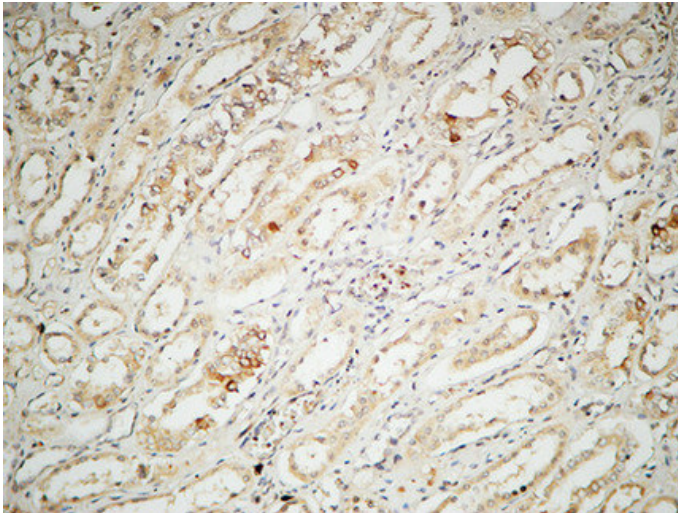
Biodragon旗下品牌

---

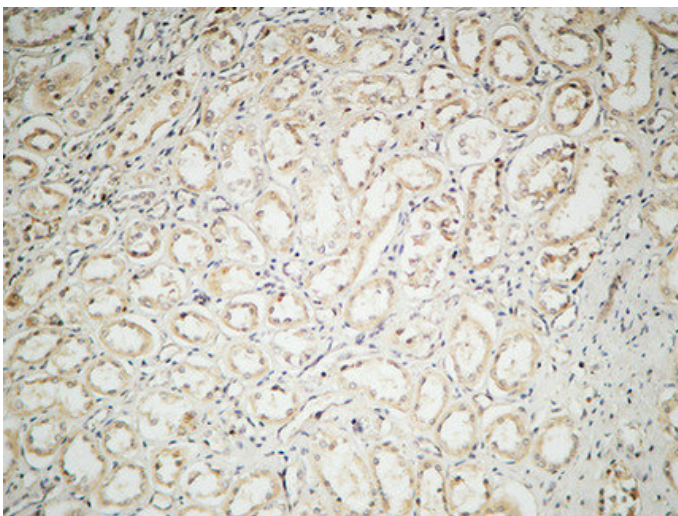
## Product Images



Western Blot analysis of various cells using IL-2 Polyclonal Antibody

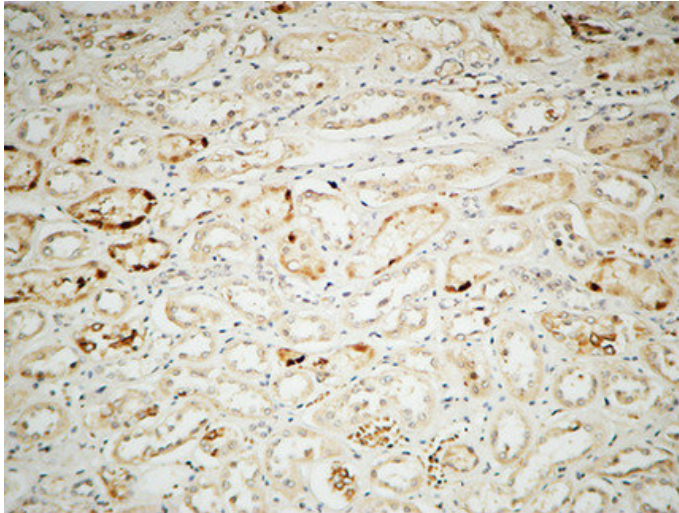


Immunohistochemical analysis of paraffin-embedded Human kidney. 1, Antibody was diluted at 1:100(4°, overnight). 2, High-pressure and temperature EDTA, pH8.0 was used for antigen retrieval. 3, Secondary antibody was diluted at 1:200(room temperature, 30min).



Immunohistochemical analysis of paraffin-embedded Human kidney. 1, Antibody was diluted at 1:100(4°, overnight). 2, High-pressure and temperature EDTA, pH8.0 was used for antigen retrieval. 3, Secondary antibody was diluted at 1:200(room temperature, 30min).

Immunohistochemical analysis of paraffin-embedded Human kidney. 1, Antibody was diluted at



1:100(4°,overnight). 2, High-pressure and temperature EDTA, pH8.0 was used for antigen retrieval. 3,Secondary antibody was diluted at 1:200(room temperature, 30min).