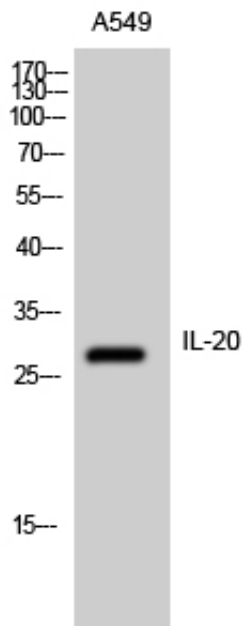




IL-20 Polyclonal Antibody

Catalog_no :	AT2324
Applications :	WB,ELISA
Reactivity :	Human,Mouse
Category :	抗原抗体
Size :	100µg/50µg/20µg
Gene_name :	IL20
Protein_name :	Interleukin-20
Humangene_id :	50604
Humanswissprot_no :	Q9NYY1
Mousegene_id :	58181
Mouseswissprot_no :	Q9JKV9
Immunogen :	The antiserum was produced against synthesized peptide derived from human IL-20. AA range:12-61
Specificity :	IL-20 Polyclonal Antibody detects endogenous levels of IL-20 protein.
Formulation :	Liquid in PBS containing 50% glycerol, 0.5% BSA and 0.02% sodium azide.
Source :	Rabbit
Dilution :	Western Blot: 1/500 - 1/2000. ELISA: 1/5000. Not yet tested in other applications.
Purification :	The antibody was affinity-purified from rabbit antiserum by affinity-chromatography using epitope-specific immunogen.
Concentration :	1 mg/ml
Storage_stability :	-20°C/1 year
Msds :	MSDS_Antibody.pdf
Other_name :	IL20; ZCYTO10; Interleukin-20; IL-20; Cytokine Zcyto10
Molecular Weight :	28KD

Product Images



Western Blot analysis of A549 cells using IL-20 Polyclonal Antibody