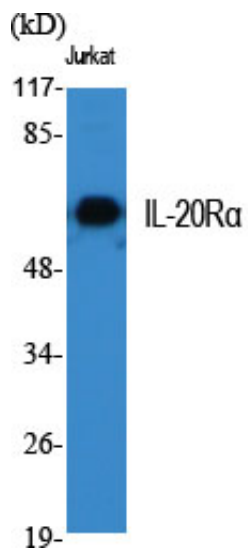


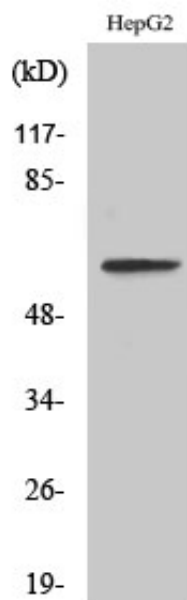
IL-20R $\alpha$  Polyclonal Antibody

Catalog_no :	AT2325
Applications :	WB,IHC-p,ELISA
Reactivity :	Human
Category :	抗原抗体
Size :	100 $\mu$ g/50 $\mu$ g/20 $\mu$ g
Gene_name :	IL20RA
Protein_name :	Interleukin-20 receptor subunit alpha
Humangene_id :	<a href="#">53832</a>
Humanswissprot_no :	<a href="#">Q9UHF4</a>
Immunogen :	The antiserum was produced against synthesized peptide derived from human IL-20R $\alpha$ . AA range:173-222
Specificity :	IL-20R $\alpha$ Polyclonal Antibody detects endogenous levels of IL-20R $\alpha$ protein.
Formulation :	Liquid in PBS containing 50% glycerol, 0.5% BSA and 0.02% sodium azide.
Source :	Rabbit
Dilution :	Western Blot: 1/500 - 1/2000. Immunohistochemistry: 1/100 - 1/300. ELISA: 1/40000. Not yet tested in other applications.
Purification :	The antibody was affinity-purified from rabbit antiserum by affinity-chromatography using epitope-specific immunogen.
Concentration :	1 mg/ml
Storage_stability :	-20°C/1 year
Msds :	MSDS_Antibody.pdf
Other_name :	IL20RA; Interleukin-20 receptor subunit alpha; IL-20 receptor subunit alpha; IL-20R-alpha; IL-20RA; Cytokine receptor class-II member 8; Cytokine receptor family 2 member 8; CRF2-8; IL-20R1; ZcytoR7
Molecular Weight :	62KD

## Product Images



Western Blot analysis of various cells using IL-20Rα Polyclonal Antibody



Western Blot analysis of LOVO cells using IL-20Rα Polyclonal Antibody