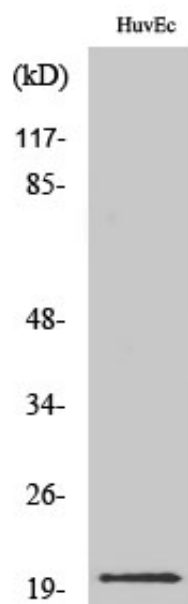




## IL-21 Polyclonal Antibody

|                     |  |
|---------------------|--|
| Catalog_no :        | <u>AT2327</u>  |
| Applications :      | <u>WB,ELISA</u>  |
| Reactivity :        | <u>Human,Mouse</u>   |
| Category :          | <u>抗原抗体</u>  |
| Size :              | <u>100µg/50µg/20µg</u>   |
| Gene_name :         | <u>IL21</u>  |
| Protein_name :      | <u>Interleukin-21</u>  |
| Humangene_id :      | <u><a href="#">59067</a></u>   |
| Humanswissprot_no : | <u><a href="#">Q9HBE4</a></u>  |
| Mousegene_id :      | <u><a href="#">60505</a></u>   |
| Mouseswissprot_no : | <u><a href="#">Q9ES17</a></u>  |
| Immunogen :         | <u>The antiserum was produced against synthesized peptide derived from human IL21. AA range:91-140</u>                       |
| Specificity :       | <u>IL-21 Polyclonal Antibody detects endogenous levels of IL-21 protein.</u>   |
| Formulation :       | <u>Liquid in PBS containing 50% glycerol, 0.5% BSA and 0.02% sodium azide.</u>   |
| Source :            | <u>Rabbit</u>  |
| Dilution :          | <u>Western Blot: 1/500 - 1/2000. ELISA: 1/20000. Not yet tested in other applications.</u>                                   |
| Purification :      | <u>The antibody was affinity-purified from rabbit antiserum by affinity-chromatography using epitope-specific immunogen.</u> |
| Concentration :     | <u>1 mg/ml</u>   |
| Storage_stability : | <u>-20°C/1 year</u>  |
| Msds :              | <u><a href="#">MSDS_Antibody.pdf</a></u>   |
| Other_name :        | <u>IL21; Interleukin-21; IL-21; Za11</u>   |
| Molecular Weight :  | <u>18KD</u>  |

## Product Images



Western Blot analysis of various cells using IL-21  
Polyclonal Antibody diluted at 1 : 500