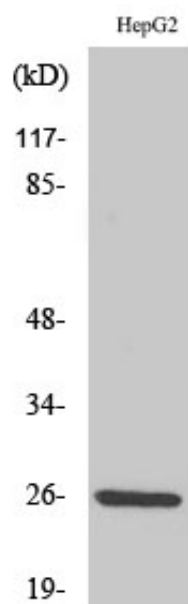




## IL-32 Polyclonal Antibody

Catalog_no :	AT2332
Applications :	WB,IHC-p,ELISA
Reactivity :	Human
Category :	抗原抗体
Size :	100µg/50µg/20µg
Gene_name :	IL32
Protein_name :	Interleukin-32
Humangene_id :	<a href="#">9235</a>
Humanswissprot_no :	<a href="#">P24001</a>
Immunogen :	The antiserum was produced against synthesized peptide derived from human IL-32. AA range:177-226
Specificity :	IL-32 Polyclonal Antibody detects endogenous levels of IL-32 protein.
Formulation :	Liquid in PBS containing 50% glycerol, 0.5% BSA and 0.02% sodium azide.
Source :	Rabbit
Dilution :	Western Blot: 1/500 - 1/2000. Immunohistochemistry: 1/100 - 1/300. ELISA: 1/40000. Not yet tested in other applications.
Purification :	The antibody was affinity-purified from rabbit antiserum by affinity-chromatography using epitope-specific immunogen.
Concentration :	1 mg/ml
Storage_stability :	-20°C/1 year
Msds :	<a href="#">MSDS_Antibody.pdf</a>
Other_name :	IL32; NK4; TAIF; Interleukin-32; IL-32; Natural killer cells protein 4; Tumor necrosis factor alpha-inducing factor
Molecular Weight :	26KD

## Product Images



Western Blot analysis of various cells using IL-32 Polyclonal Antibody