



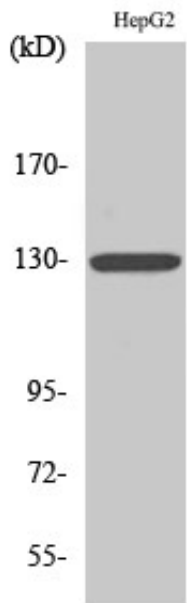
IL-3R β Polyclonal Antibody

Catalog_no :	<u>AT2333</u>
Applications :	<u>WB,IHC-p,ELISA</u>
Reactivity :	<u>Human,Mouse,Rat</u>
Category :	<u>抗原抗体</u>
Size :	<u>100μg/50μg/20μg</u>
Gene_name :	<u>CSF2RB</u>
Protein_name :	<u>Cytokine receptor common subunit beta</u>
Humangene_id :	<u>1439</u>
Humanswissprot_no :	<u>P32927</u>
Mousegene_id :	<u>12983</u>
Mouseswissprot_no :	<u>P26955</u>
Immunogen :	<u>The antiserum was produced against synthesized peptide derived from human IL-3R beta. AA range:559-608</u>
Specificity :	<u>IL-3Rβ Polyclonal Antibody detects endogenous levels of IL-3Rβ protein.</u>
Formulation :	<u>Liquid in PBS containing 50% glycerol, 0.5% BSA and 0.02% sodium azide.</u>
Source :	<u>Rabbit</u>
Dilution :	<u>Western Blot: 1/500 - 1/2000. Immunohistochemistry: 1/100 - 1/300. ELISA: 1/5000. Not yet tested in other applications.</u>
Purification :	<u>The antibody was affinity-purified from rabbit antiserum by affinity-chromatography using epitope-specific immunogen.</u>
Concentration :	<u>1 mg/ml</u>
Storage_stability :	<u>-20°C/1 year</u>
Msds :	<u>MSDS_Antibody.pdf</u>
Other_name :	<u>CSF2RB; IL3RB; IL5RB; Cytokine receptor common subunit beta; CDw131; GM-CSF/IL-3/IL-5 receptor common beta subunit; CD antigen CD131</u>
Molecular	<u>44KD</u>

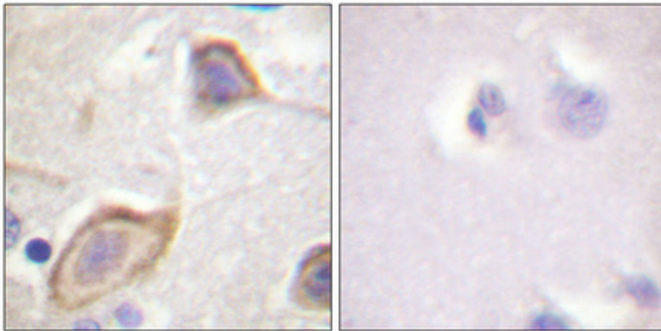


Weight :

Product Images



Western Blot analysis of various cells using IL-3R β Polyclonal Antibody



Immunohistochemical analysis of paraffin-embedded Human brain. Antibody was diluted at 1:100(4 $^{\circ}$,overnight). High-pressure and temperature Tris-EDTA,pH8.0 was used for antigen retrieval. Negative contrl (right) obtaned from antibody was pre-absorbed by immunogen peptide.