



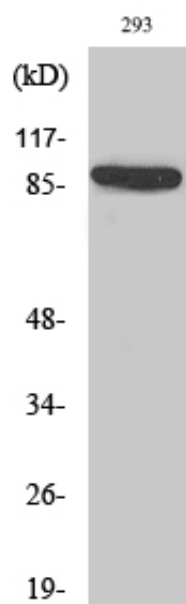
IL-4R α Polyclonal Antibody

Catalog_no :	AT2337
Applications :	WB,IF,ELISA
Reactivity :	Human,Mouse
Category :	抗原抗体
Size :	100 μ g/50 μ g/20 μ g
Gene_name :	IL4R
Protein_name :	Interleukin-4 receptor subunit alpha
Humangene_id :	3566
Humanswissprot_no :	P24394
Mousegene_id :	16190
Mouseswissprot_no :	P16382
Immunogen :	The antiserum was produced against synthesized peptide derived from human IL-4R/CD124. AA range:463-512
Specificity :	IL-4R α Polyclonal Antibody detects endogenous levels of IL-4R α protein.
Formulation :	Liquid in PBS containing 50% glycerol, 0.5% BSA and 0.02% sodium azide.
Source :	Rabbit
Dilution :	Western Blot: 1/500 - 1/2000. Immunofluorescence: 1/200 - 1/1000. ELISA: 1/20000. Not yet tested in other applications.
Purification :	The antibody was affinity-purified from rabbit antiserum by affinity-chromatography using epitope-specific immunogen.
Concentration :	1 mg/ml
Storage_stability :	-20°C/1 year
Msds :	MSDS_Antibody.pdf
Other_name :	IL4R; IL4RA; 582J2.1; Interleukin-4 receptor subunit alpha; IL-4 receptor subunit alpha; IL-4R subunit alpha; IL-4R-alpha; IL-4RA; CD antigen CD124
Molecular	90KD

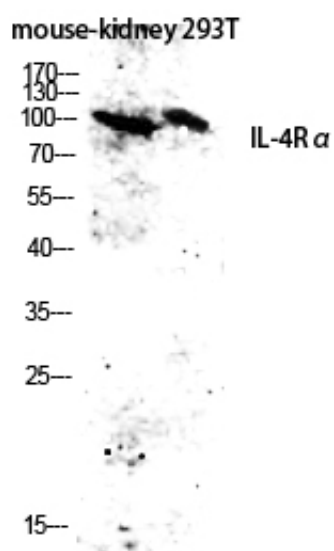


Weight :

Product Images



Western Blot analysis of various cells using IL-4R α Polyclonal Antibody diluted at 1 : 2000



Western blot analysis of mouse-kidney 293T lysis using IL-4R α antibody. Antibody was diluted at 1:2000