

IL-7R Polyclonal Antibody

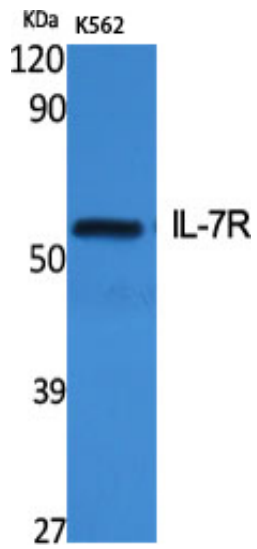
Catalog_no :	AT2341
Applications :	WB,ELISA
Reactivity :	Human,Mouse,Monkey
Category :	抗原抗体
Size :	100µg/50µg/20µg
Gene_name :	IL7R
Protein_name :	Interleukin-7 receptor subunit alpha
Humangene_id :	3575
Humanswissprot_no :	P16871
Mousegene_id :	16197
Mouseswissprot_no :	P16872
Immunogen :	The antiserum was produced against synthesized peptide derived from human IL-7R/CD127. AA range:410-459
Specificity :	IL-7R Polyclonal Antibody detects endogenous levels of IL-7R protein.
Formulation :	Liquid in PBS containing 50% glycerol, 0.5% BSA and 0.02% sodium azide.
Source :	Rabbit
Dilution :	Western Blot: 1/500 - 1/2000. ELISA: 1/40000. Not yet tested in other applications.
Purification :	The antibody was affinity-purified from rabbit antiserum by affinity-chromatography using epitope-specific immunogen.
Concentration :	1 mg/ml
Storage_stability :	-20°C/1 year
Msds :	MSDS_Antibody.pdf
Other_name :	IL7R; Interleukin-7 receptor subunit alpha; IL-7 receptor subunit alpha; IL-7R subunit alpha; IL-7R-alpha; IL-7RA; CDw127; CD antigen CD127
Molecular Weight :	52KD



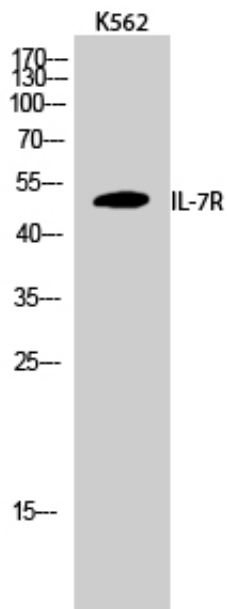
专注二抗产品

Biodragon旗下品牌

Product Images



Western Blot analysis of various cells using IL-7R Polyclonal Antibody



Western Blot analysis of K562 cells using IL-7R Polyclonal Antibody