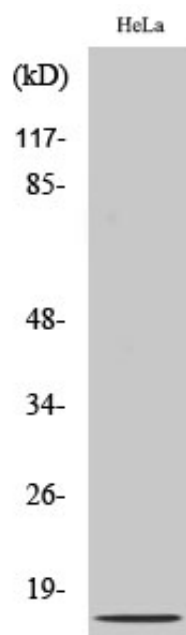


IL-8 Polyclonal Antibody

Catalog_no :	AT2343
Applications :	WB,IHC-p,ELISA
Reactivity :	Human
Category :	抗原抗体
Size :	100µg/50µg/20µg
Gene_name :	IL8
Protein_name :	Interleukin-8
Humangene_id :	3576
Humanswissprot_no :	P10145
Immunogen :	The antiserum was produced against synthesized peptide derived from human IL-8. AA range:19-68
Specificity :	IL-8 Polyclonal Antibody detects endogenous levels of IL-8 protein.
Formulation :	Liquid in PBS containing 50% glycerol, 0.5% BSA and 0.02% sodium azide.
Source :	Rabbit
Dilution :	Western Blot: 1/500 - 1/2000. Immunohistochemistry: 1/100 - 1/300. ELISA: 1/20000. Not yet tested in other applications.
Purification :	The antibody was affinity-purified from rabbit antiserum by affinity-chromatography using epitope-specific immunogen.
Concentration :	1 mg/ml
Storage_stability :	-20°C/1 year
Msds :	MSDS_Antibody.pdf
Other_name :	IL8; CXCL8; Interleukin-8; IL-8; C-X-C motif chemokine 8; Emoctakin; Granulocyte chemotactic protein 1; GCP-1; Monocyte-derived neutrophil chemotactic factor; MDNCF; Monocyte-derived neutrophil-activating peptide; MONAP; Neutrophil-activati
Molecular Weight :	8KD

Product Images



Western Blot analysis of various cells using IL-8 Polyclonal Antibody