



## ILKAP Polyclonal Antibody

Catalog_no :	AT2347
Applications :	WB,IHC-p,IF,ELISA
Reactivity :	Human,Mouse,Rat,Monkey
Category :	抗原抗体
Size :	100µg/50µg/20µg
Gene_name :	ILKAP
Protein_name :	Integrin-linked kinase-associated serine/threonine phosphatase 2C
Humangene_id :	<a href="#">80895</a>
Humanswissprot_no :	<a href="#">Q9H0C8</a>
Mousegene_id :	<a href="#">67444</a>
Mouseswissprot_no :	<a href="#">Q8R0F6</a>
Ratgene_id :	<a href="#">64538</a>
Ratswissprot_no :	<a href="#">Q9Z1Z6</a>
Immunogen :	The antiserum was produced against synthesized peptide derived from human ILKAP. AA range:41-90
Specificity :	ILKAP Polyclonal Antibody detects endogenous levels of ILKAP protein.
Formulation :	Liquid in PBS containing 50% glycerol, 0.5% BSA and 0.02% sodium azide.
Source :	Rabbit
Dilution :	Western Blot: 1/500 - 1/2000. Immunohistochemistry: 1/100 - 1/300. Immunofluorescence: 1/200 - 1/1000. ELISA: 1/20000. Not yet tested in other applications.
Purification :	The antibody was affinity-purified from rabbit antiserum by affinity-chromatography using epitope-specific immunogen.
Concentration :	1 mg/ml
Storage_stability :	-20°C/1 year

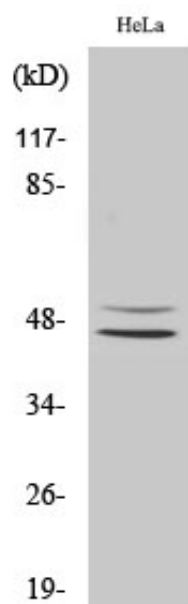


Msd : MSDS\_Antibody.pdf

Other\_name : ILKAP; Integrin-linked kinase-associated serine/threonine phosphatase 2C; ILKAP

Molecular Weight : 45KD

## Product Images



Western Blot analysis of various cells using ILKAP Polyclonal Antibody