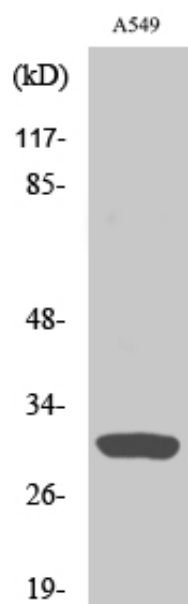


Inhibin β -C Polyclonal Antibody

Catalog_no :	AT2350
Applications :	WB,IHC-p,ELISA
Reactivity :	Human
Category :	抗原抗体
Size :	100 μ g/50 μ g/20 μ g
Gene_name :	INHBC
Protein_name :	Inhibin beta C chain
Humangene_id :	3626
Humanswissprot_no :	P55103
Immunogen :	The antiserum was produced against synthesized peptide derived from human Inhibin beta-C. AA range:80-129
Specificity :	Inhibin β -C Polyclonal Antibody detects endogenous levels of Inhibin β -C protein.
Formulation :	Liquid in PBS containing 50% glycerol, 0.5% BSA and 0.02% sodium azide.
Source :	Rabbit
Dilution :	Western Blot: 1/500 - 1/2000. Immunohistochemistry: 1/100 - 1/300. ELISA: 1/5000. Not yet tested in other applications.
Purification :	The antibody was affinity-purified from rabbit antiserum by affinity-chromatography using epitope-specific immunogen.
Concentration :	1 mg/ml
Storage_stability :	-20°C/1 year
Msds :	MSDS_Antibody.pdf
Other_name :	INHBC; Inhibin beta C chain; Activin beta-C chain
Molecular Weight :	30KD

Product Images



Western Blot analysis of various cells using Inhibin β -C Polyclonal Antibody