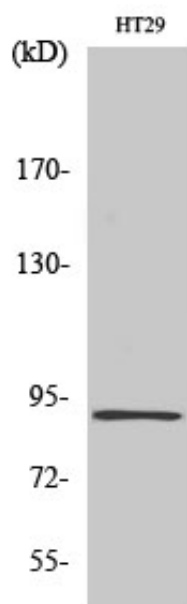


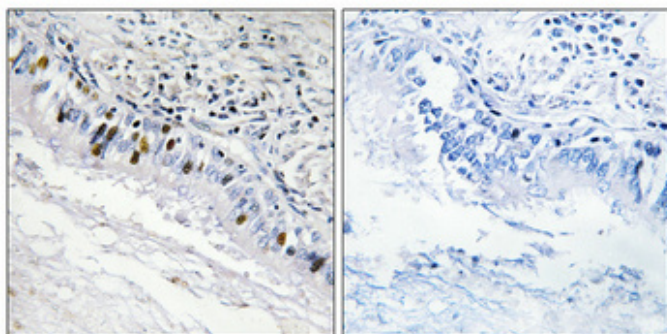
InsP 3-kinase C Polyclonal Antibody

Catalog_no :	AT2354
Applications :	WB,IHC-p,ELISA
Reactivity :	Human
Category :	抗原抗体
Size :	100µg/50µg/20µg
Gene_name :	ITPKC
Protein_name :	Inositol-trisphosphate 3-kinase C
Humangene_id :	80271
Humanswissprot_no :	Q96DU7
Immunogen :	The antiserum was produced against synthesized peptide derived from human IP3KC. AA range:221-270
Specificity :	InsP 3-kinase C Polyclonal Antibody detects endogenous levels of InsP 3-kinase C protein.
Formulation :	Liquid in PBS containing 50% glycerol, 0.5% BSA and 0.02% sodium azide.
Source :	Rabbit
Dilution :	Western Blot: 1/500 - 1/2000. Immunohistochemistry: 1/100 - 1/300. ELISA: 1/10000. Not yet tested in other applications.
Purification :	The antibody was affinity-purified from rabbit antiserum by affinity-chromatography using epitope-specific immunogen.
Concentration :	1 mg/ml
Storage_stability :	-20°C/1 year
Msds :	MSDS_Antibody.pdf
Other_name :	ITPKC; IP3KC; Inositol-trisphosphate 3-kinase C; Inositol 1; 4,5-trisphosphate 3-kinase C; IP3 3-kinase C; IP3K C; InsP 3-kinase C
Molecular Weight :	102KD

Product Images



Western Blot analysis of various cells using InsP 3-kinase C Polyclonal Antibody diluted at 1 : 2000



Immunohistochemical analysis of paraffin-embedded Human lung cancer. Antibody was diluted at 1:100(4°, overnight). High-pressure and temperature Tris-EDTA, pH8.0 was used for antigen retrieval. Negative control (right) obtained from antibody was pre-absorbed by immunogen peptide.