

## InsP6 Kinase 3 Polyclonal Antibody

Catalog_no :	AT2356
Applications :	WB,IHC-p,IF,ELISA
Reactivity :	Human,Mouse
Category :	抗原抗体
Size :	100µg/50µg/20µg
Gene_name :	IP6K3
Protein_name :	Inositol hexakisphosphate kinase 3
Humangene_id :	<a href="#">117283</a>
Humanswissprot_no :	<a href="#">Q96PC2</a>
Mousegene_id :	<a href="#">271424</a>
Mouseswissprot_no :	<a href="#">Q8BWD2</a>
Immunogen :	The antiserum was produced against synthesized peptide derived from human IP6K3. AA range:201-250
Specificity :	InsP6 Kinase 3 Polyclonal Antibody detects endogenous levels of InsP6 Kinase 3 protein.
Formulation :	Liquid in PBS containing 50% glycerol, 0.5% BSA and 0.02% sodium azide.
Source :	Rabbit
Dilution :	Western Blot: 1/500 - 1/2000. Immunohistochemistry: 1/100 - 1/300. Immunofluorescence: 1/200 - 1/1000. ELISA: 1/20000. Not yet tested in other applications.
Purification :	The antibody was affinity-purified from rabbit antiserum by affinity-chromatography using epitope-specific immunogen.
Concentration :	1 mg/ml
Storage_stability :	-20°C/1 year
Msds :	<a href="#">MSDS_Antibody.pdf</a>
Other_name :	IP6K3; IHPK3; Inositol hexakisphosphate kinase 3; InsP6 kinase 3; Inositol hexaphosphate kinase 3

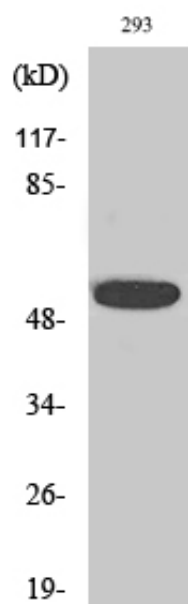


Molecular  
Weight :

51KD

---

## Product Images



Western Blot analysis of various cells using InsP6 Kinase 3 Polyclonal Antibody