

Integrin α 3 Polyclonal Antibody

Catalog_no :	AT2362
Applications :	WB,ELISA
Reactivity :	Human,Mouse,Rat
Category :	抗原抗体
Size :	100 μ g/50 μ g/20 μ g
Gene_name :	ITGA3
Protein_name :	Integrin alpha-3
Humangene_id :	3675
Humanswissprot_no :	P26006
Mousegene_id :	16400
Mouseswissprot_no :	Q62470
Immunogen :	The antiserum was produced against synthesized peptide derived from human Integrin alpha3. AA range:482-531
Specificity :	Integrin α 3 Polyclonal Antibody detects endogenous levels of Integrin α 3 protein.
Formulation :	Liquid in PBS containing 50% glycerol, 0.5% BSA and 0.02% sodium azide.
Source :	Rabbit
Dilution :	Western Blot: 1/500 - 1/2000. ELISA: 1/40000. Not yet tested in other applications.
Purification :	The antibody was affinity-purified from rabbit antiserum by affinity-chromatography using epitope-specific immunogen.
Concentration :	1 mg/ml
Storage_stability :	-20°C/1 year
Msds :	MSDS_Antibody.pdf
Other_name :	ITGA3; MSK18; Integrin alpha-3; CD49 antigen-like family member C; FRP-2; Galactoprotein B3; GAPB3; VLA-3 subunit alpha; CD antigen CD49c
Molecular Weight :	150KD

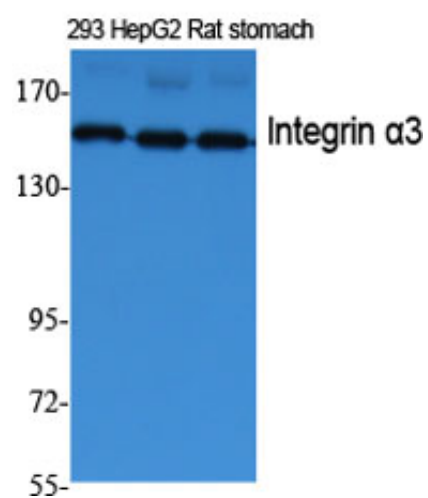


专注二抗产品

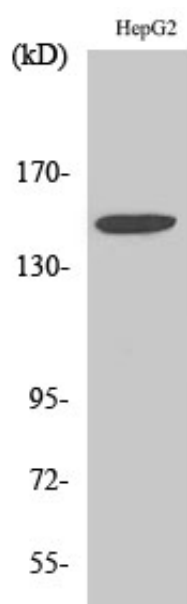
Biodragon旗下品牌

Product Images

(kD)



Western Blot analysis of various cells using Integrin α 3 Polyclonal Antibody diluted at 1 : 2000



Western Blot analysis of HepG2 cells using Integrin α 3 Polyclonal Antibody diluted at 1 : 2000