

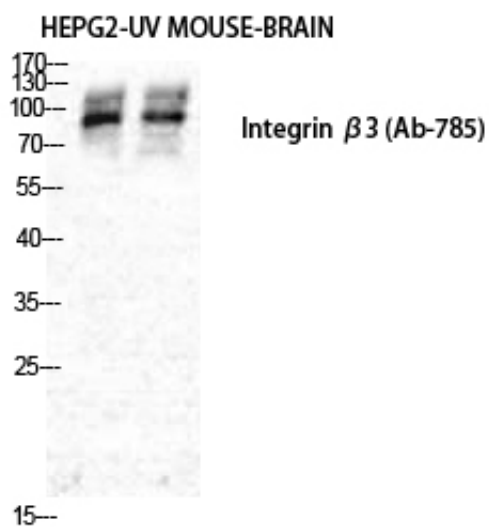
Integrin β 3 Polyclonal Antibody

| | |
|---------------------|--|
| Catalog_no : | AT2370 |
| Applications : | WB,IHC-p,ELISA |
| Reactivity : | Human,Mouse,Rat |
| Category : | 抗原抗体 |
| Size : | 100 μ g/50 μ g/20 μ g |
| Gene_name : | ITGB3 |
| Protein_name : | Integrin beta-3 |
| Humangene_id : | 3690 |
| Humanswissprot_no : | P05106 |
| Mousegene_id : | 16416 |
| Mouseswissprot_no : | O54890 |
| Immunogen : | The antiserum was produced against synthesized peptide derived from human Integrin beta3. AA range:739-788 |
| Specificity : | Integrin β 3 Polyclonal Antibody detects endogenous levels of Integrin β 3 protein. |
| Formulation : | Liquid in PBS containing 50% glycerol, 0.5% BSA and 0.02% sodium azide. |
| Source : | Rabbit |
| Dilution : | Western Blot: 1/500 - 1/2000. Immunohistochemistry: 1/100 - 1/300. ELISA: 1/10000. Not yet tested in other applications. |
| Purification : | The antibody was affinity-purified from rabbit antiserum by affinity-chromatography using epitope-specific immunogen. |
| Concentration : | 1 mg/ml |
| Storage_stability : | -20°C/1 year |
| Msds : | MSDS_Antibody.pdf |
| Other_name : | ITGB3; GP3A; Integrin beta-3; Platelet membrane glycoprotein IIIa; GPIIIa; CD antigen CD61 |
| Molecular | 110KD |

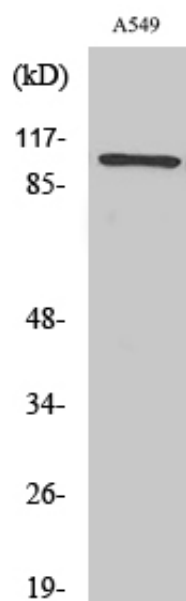


Weight :

Product Images



Western Blot analysis of various cells using Integrin β 3 Polyclonal Antibody diluted at 1 : 500



Western Blot analysis of NIH-3T3 cells using Integrin β 3 Polyclonal Antibody diluted at 1 : 500