

## Intestinal Cell Kinase Polyclonal Antibody

Catalog_no :	AT2375
Applications :	WB,IHC-p,ELISA
Reactivity :	Human,Mouse,Rat
Category :	抗原抗体
Size :	100µg/50µg/20µg
Gene_name :	ICK
Protein_name :	Serine/threonine-protein kinase ICK
Humangene_id :	<a href="#">22858</a>
Humanswissprot_no :	<a href="#">Q9UPZ9</a>
Mousegene_id :	<a href="#">56542</a>
Mouseswissprot_no :	<a href="#">Q9JKV2</a>
Ratgene_id :	<a href="#">84411</a>
Ratswissprot_no :	<a href="#">Q62726</a>
Immunogen :	The antiserum was produced against synthesized peptide derived from human ICK. AA range:125-174
Specificity :	Intestinal Cell Kinase Polyclonal Antibody detects endogenous levels of Intestinal Cell Kinase protein.
Formulation :	Liquid in PBS containing 50% glycerol, 0.5% BSA and 0.02% sodium azide.
Source :	Rabbit
Dilution :	Western Blot: 1/500 - 1/2000. Immunohistochemistry: 1/100 - 1/300. ELISA: 1/20000. Not yet tested in other applications.
Purification :	The antibody was affinity-purified from rabbit antiserum by affinity-chromatography using epitope-specific immunogen.
Concentration :	1 mg/ml
Storage_stability :	-20°C/1 year

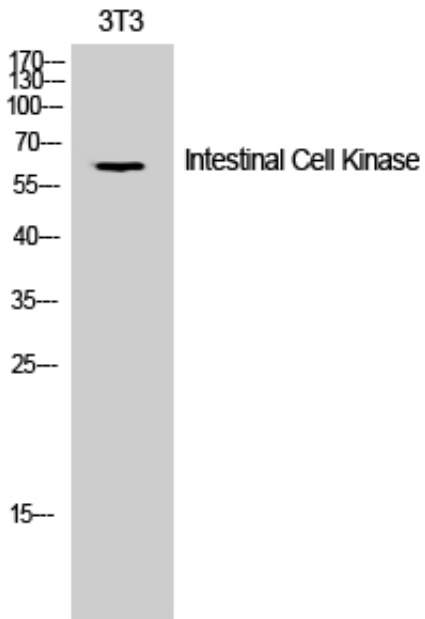


MsdS : MSDS\_Antibody.pdf

Other\_name : ICK; KIAA0936; Serine/threonine-protein kinase ICK; Intestinal cell kinase; hICK; Laryngeal cancer kinase 2; LCK2; MAK-related kinase; MRK

Molecular Weight : 65KD

## Product Images



Western Blot analysis of 3T3 cells using Intestinal Cell Kinase Polyclonal Antibody