

## IP3KA Polyclonal Antibody

Catalog_no :	AT2380
Applications :	WB,IF,ELISA
Reactivity :	Human,Mouse,Rat
Category :	抗原抗体
Size :	100µg/50µg/20µg
Gene_name :	ITPKA
Protein_name :	Inositol-trisphosphate 3-kinase A
Humangene_id :	<a href="#">3706</a>
Humanswissprot_no :	<a href="#">P23677</a>
Mousegene_id :	<a href="#">228550</a>
Mouseswissprot_no :	<a href="#">Q8R071</a>
Ratgene_id :	<a href="#">81677</a>
Ratswissprot_no :	<a href="#">P17105</a>
Immunogen :	The antiserum was produced against synthesized peptide derived from human IP3KA. AA range:396-445
Specificity :	IP3KA Polyclonal Antibody detects endogenous levels of IP3KA protein.
Formulation :	Liquid in PBS containing 50% glycerol, 0.5% BSA and 0.02% sodium azide.
Source :	Rabbit
Dilution :	Western Blot: 1/500 - 1/2000. Immunofluorescence: 1/200 - 1/1000. ELISA: 1/20000. Not yet tested in other applications.
Purification :	The antibody was affinity-purified from rabbit antiserum by affinity-chromatography using epitope-specific immunogen.
Concentration :	1 mg/ml
Storage_stability :	-20°C/1 year
Msds :	MSDS_Antibody.pdf



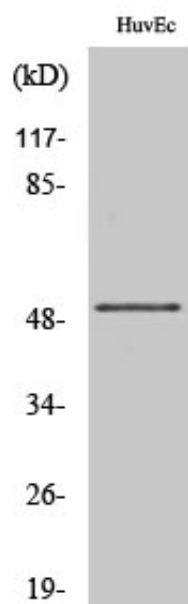
Other\_name : ITPKA; Inositol-trisphosphate 3-kinase A; Inositol 1; 4,5-trisphosphate 3-kinase A; IP3 3-kinase A; IP3K A; InsP 3-kinase A

---

Molecular Weight : 52KD

---

## Product Images



Western Blot analysis of various cells using IP3KA Polyclonal Antibody